

Microsoft SQL Server 2005

How to Install and Set up Manually Guide

1.1. Introduction

To use the **e-Granthalaya** Software for automation of your library, you need to install the database management program i.e. “Microsoft SQL Server”. Further, there are various editions within the Version, which edition you need that depends on the “Implementation Mode” of the e-Granthalaya:

1.2. Implementation Modes

2. Stand-Alone Mode (One PC) – SQL Server 2005 – Express Edition (Free with e-Granthalaya CD)
3. LAN Based Client/Server Mode (One Server PC and many clients PCs) – SQL Server 2005 – Standard Edition (License Version) – for Local/LAN based access Only
4. WAN Based Client/Server Mode (One Server PC and many clients PCs) – SQL Server 2005 – Enterprise Edition (License Version) – for Web Based access

1.3. Pre-Requisites to be installed before installation of the MS SQL Server 2005

(A). For 32 Bit PC (Windows XP/Vista/Windows Server 2003)

1. Windows Installer 3.1
2. .NET Framework 2.0

(B). For 64 Bit PC (Windows Server 2008/win 7)

3. NET Framework 2.0
4. NET Framework 4.0

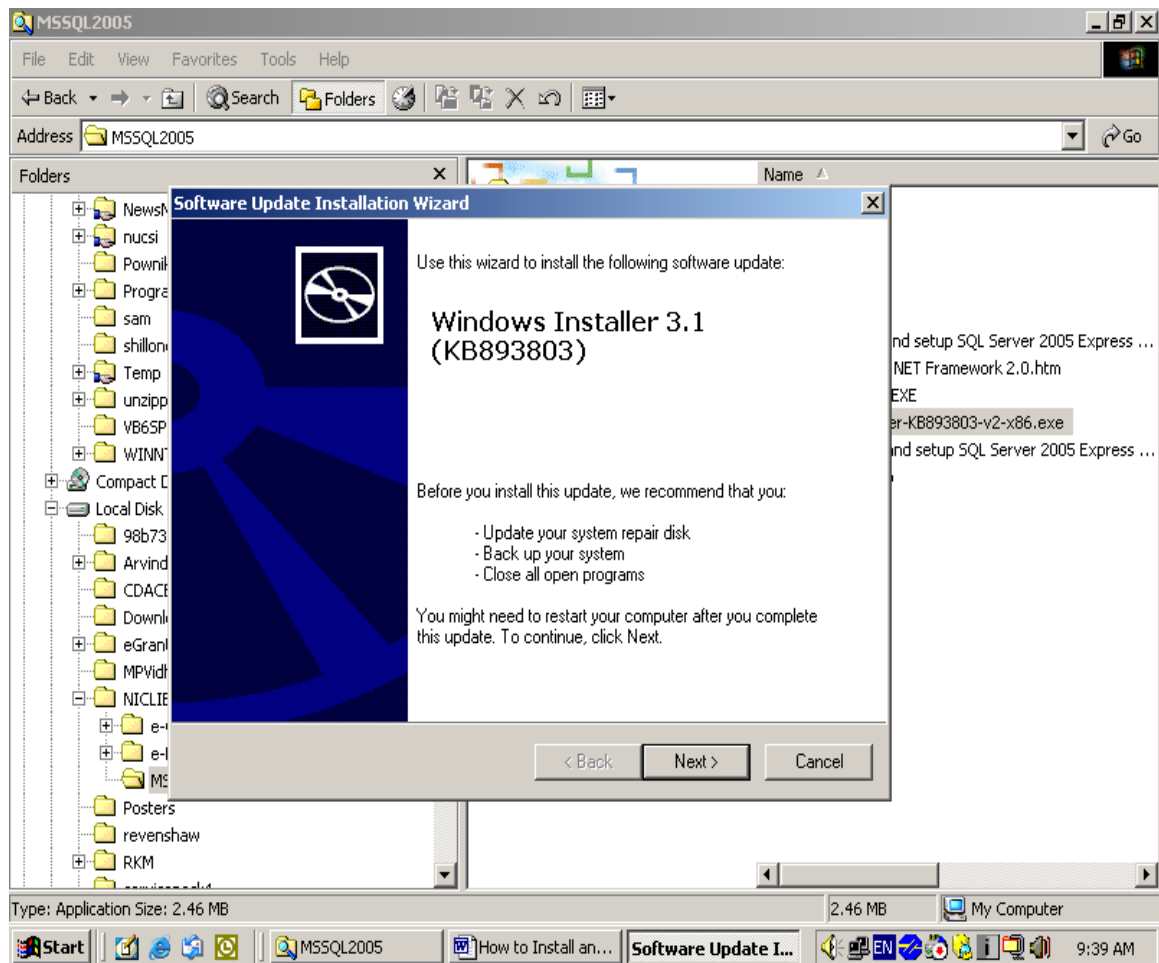
NOTE: These all pre-requisites are available in e-Granthalaya CD

NOTE: Before installation of MS SQL Server 2005, please make sure that you are running Internet Explorer 6.0 or later version, if not then first upgrade your internet Explorer by installing the Service Pack1 (SP1) of Internet Explorer

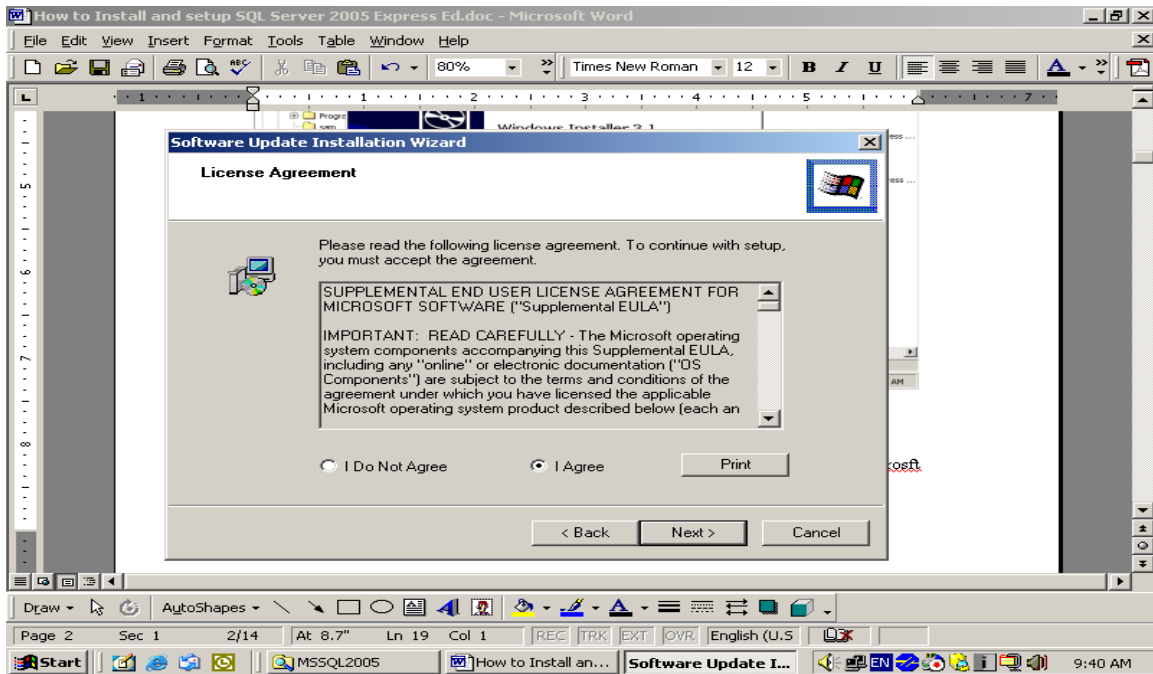
[A]. How to Install “Windows Installer 3.1” – Pre-Requisites

Please install this software from the CD. The file name is “**WindowsInstaller KB893803-v2-x86..** “. To install this file, please double click the file and follow the instructions provided further:-

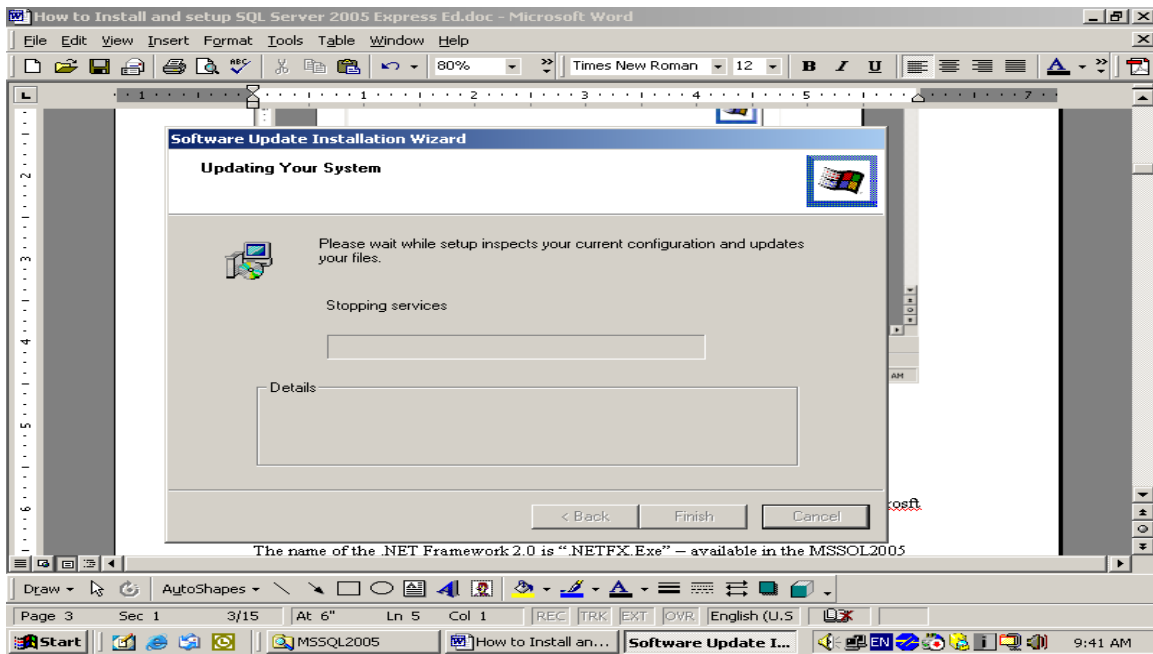
Step1.: Double click the file (WindowsInstaller Kb893803-v2-x86...”



Step2: Press NEXT button



Step3: Select “I Agree” option and press NEXT button

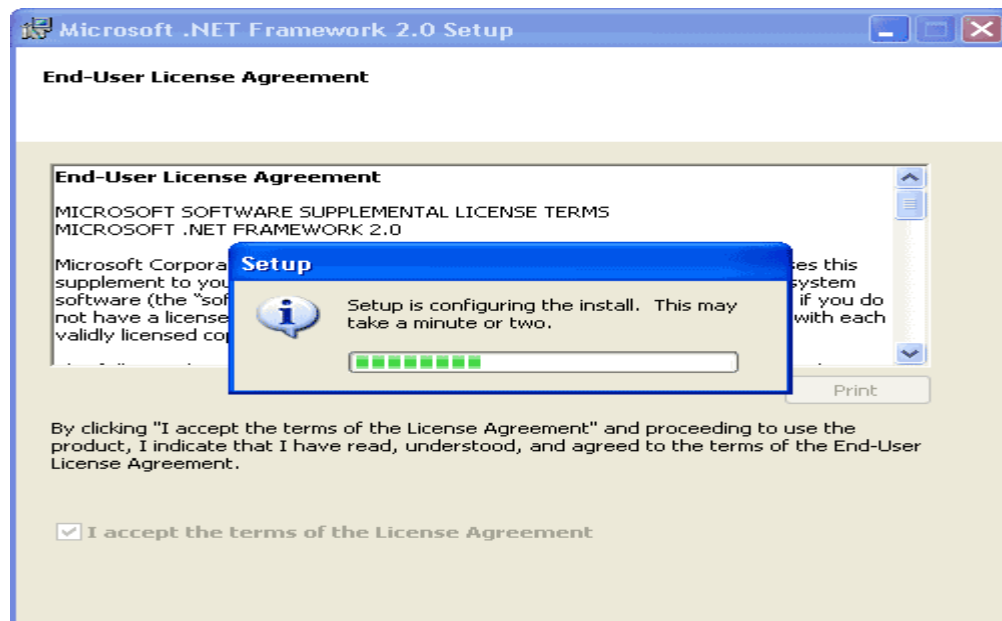


Step 4: Press FINISH and re-boot the PC to install the next component i.e. .NET Framework 2.0

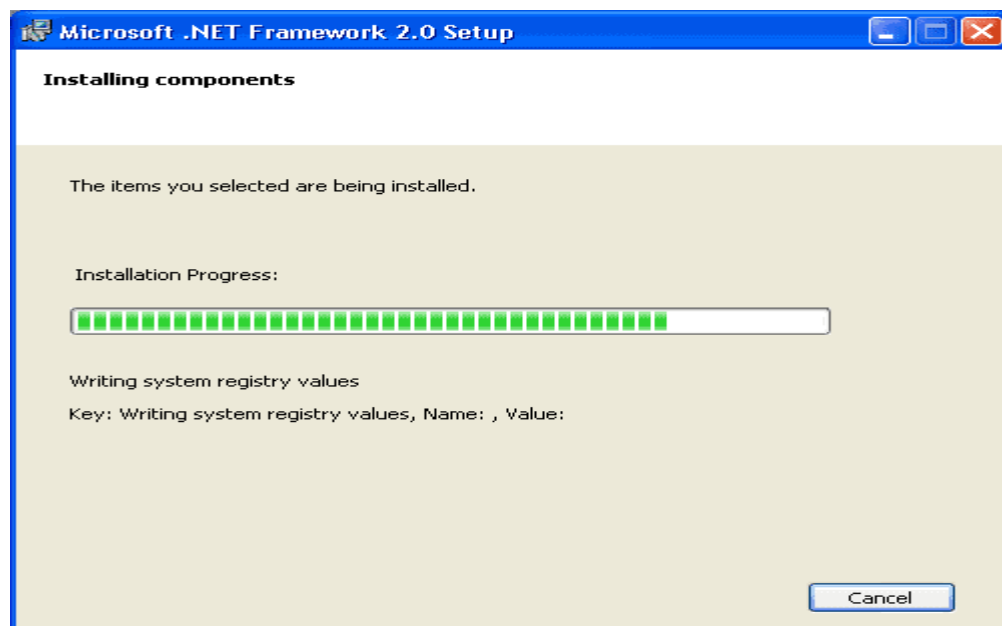
[B]. How to Install “.NET Framework 2.0”

Step 1: First before installation of the MS SQL Server 2005, you need to install “Microsoft .NET framework 2.0” from the CD. The name of the .NET Framework 2.0 is “.NETFX.Exe” – available in the MSSQL2005 sub-folder of e-Granth folder in the CD

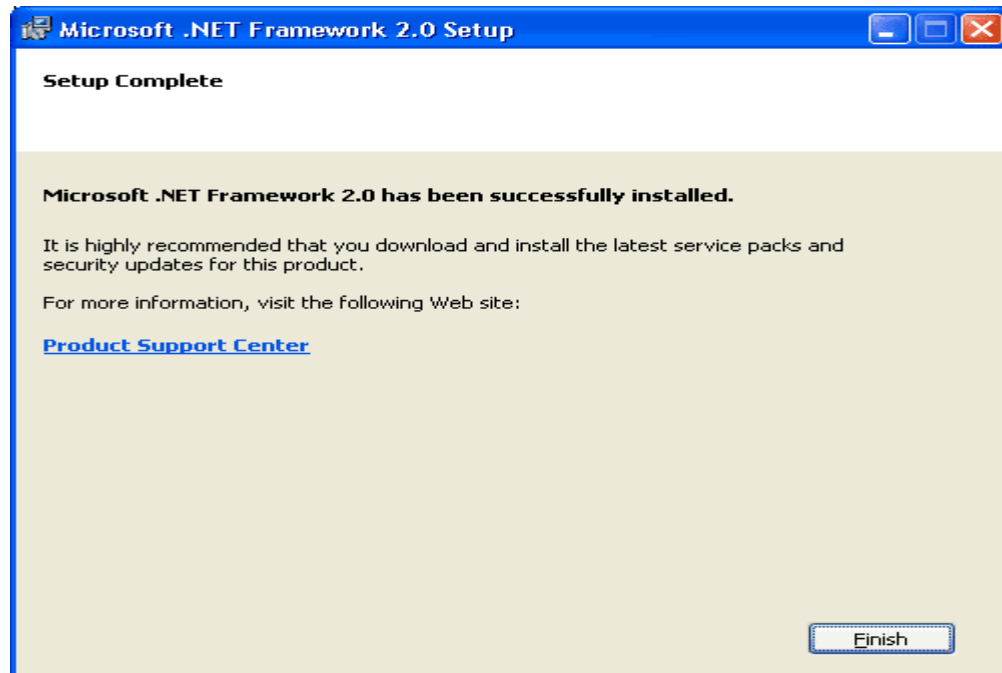
After double click the above file , following screen will appear



Step 2: Installation will check the system and will continue

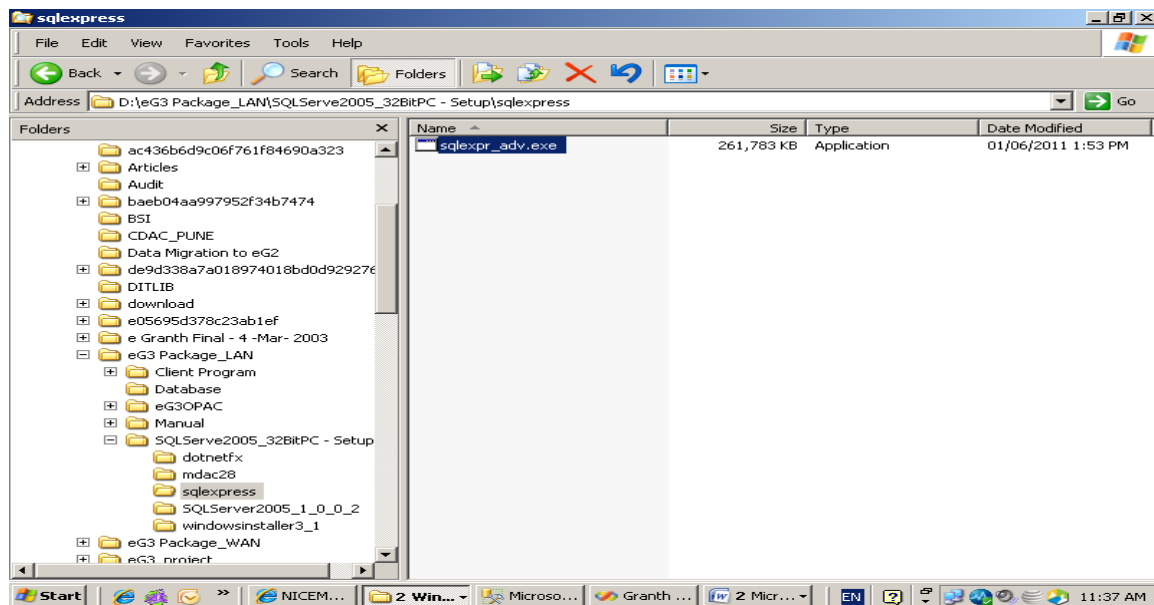


Step3: After successful installation press FINISH button and re-boot the PC

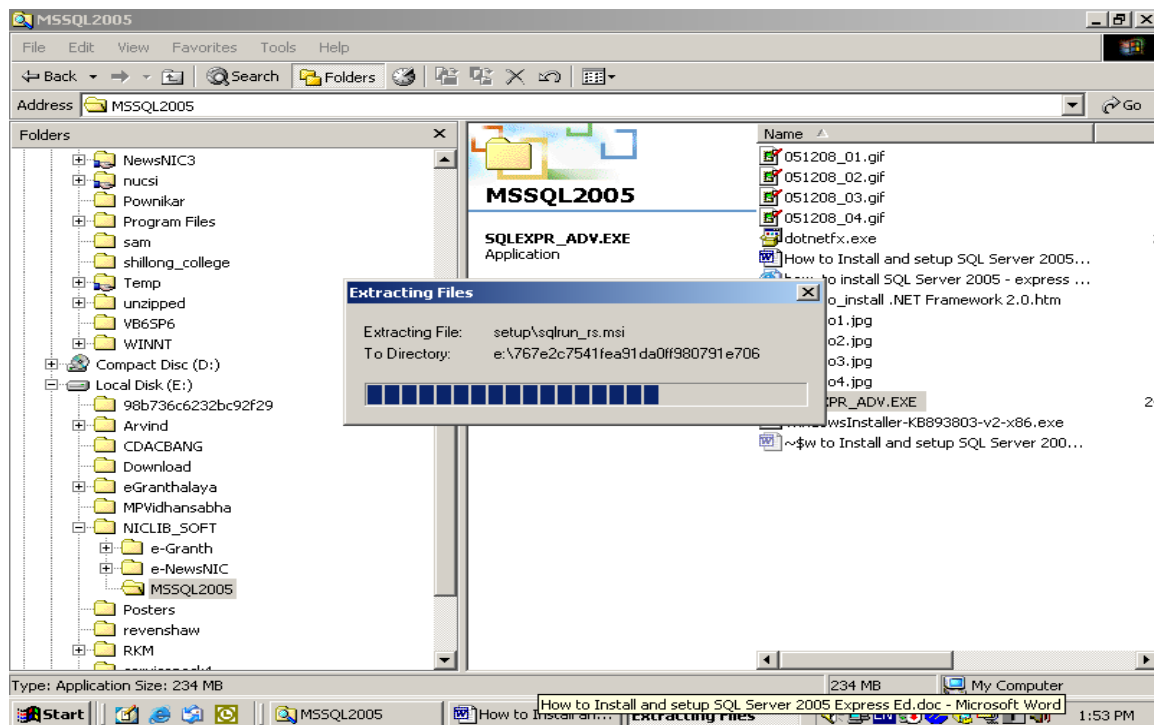


1.4. How to Install “MS SQL Server 2005” Manually

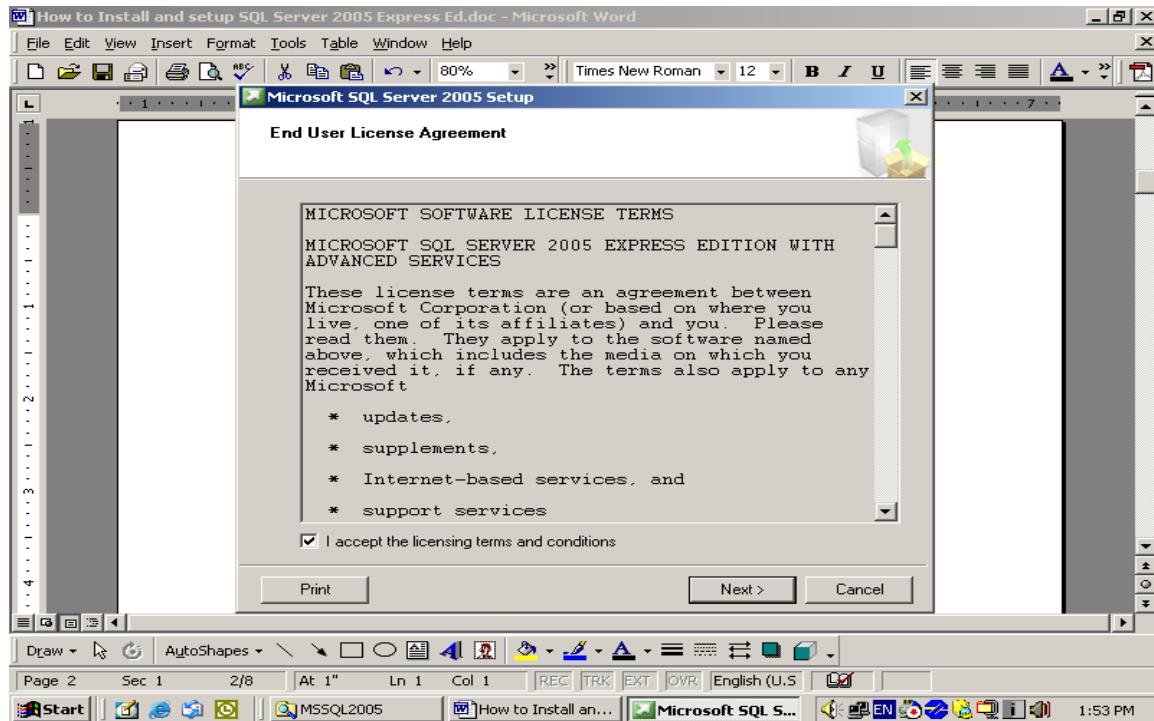
Now after installation of “Windows Installer” and “.NET Framework 2.0” – you can start the installation of the MS SQL Server 2005. (For Express Ed: The software is free and can be downloaded from the Microsoft Site. We have given the file in the CD under the MS SQL2005 folder. The name of the file is “SQLEXP-ADV.EXE”).



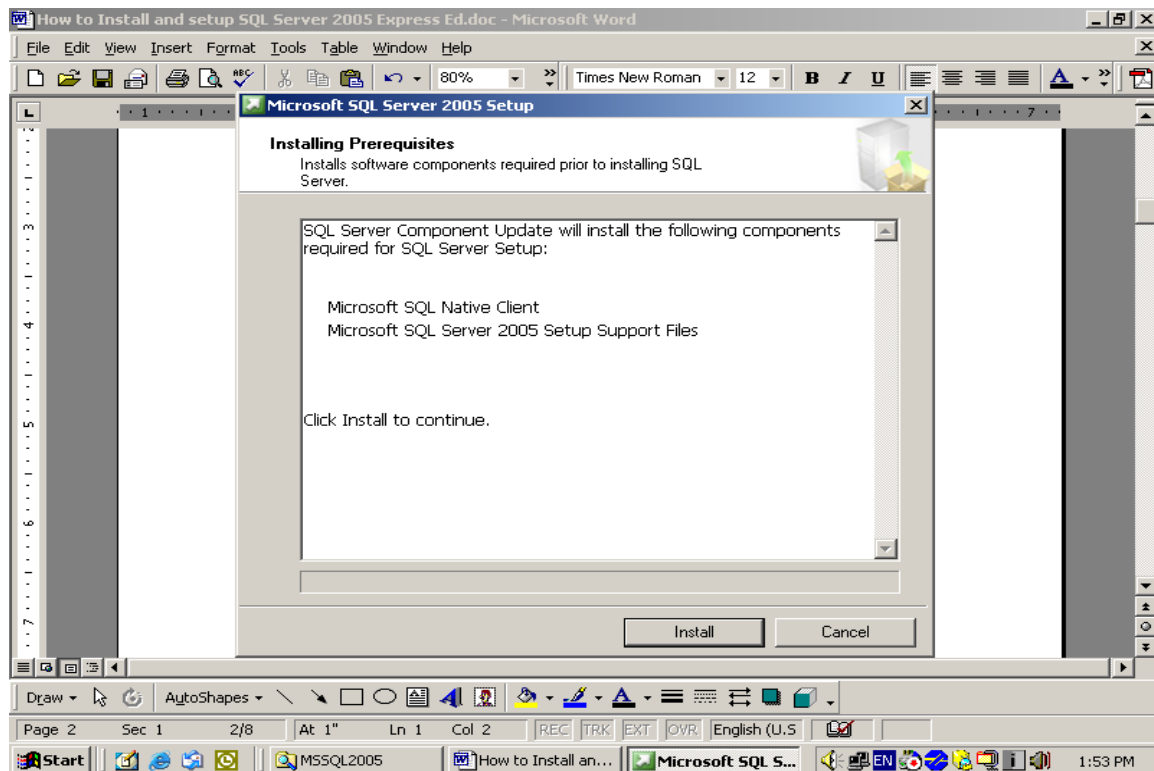
Step1: Double click the File mentioned above, following screen will appear



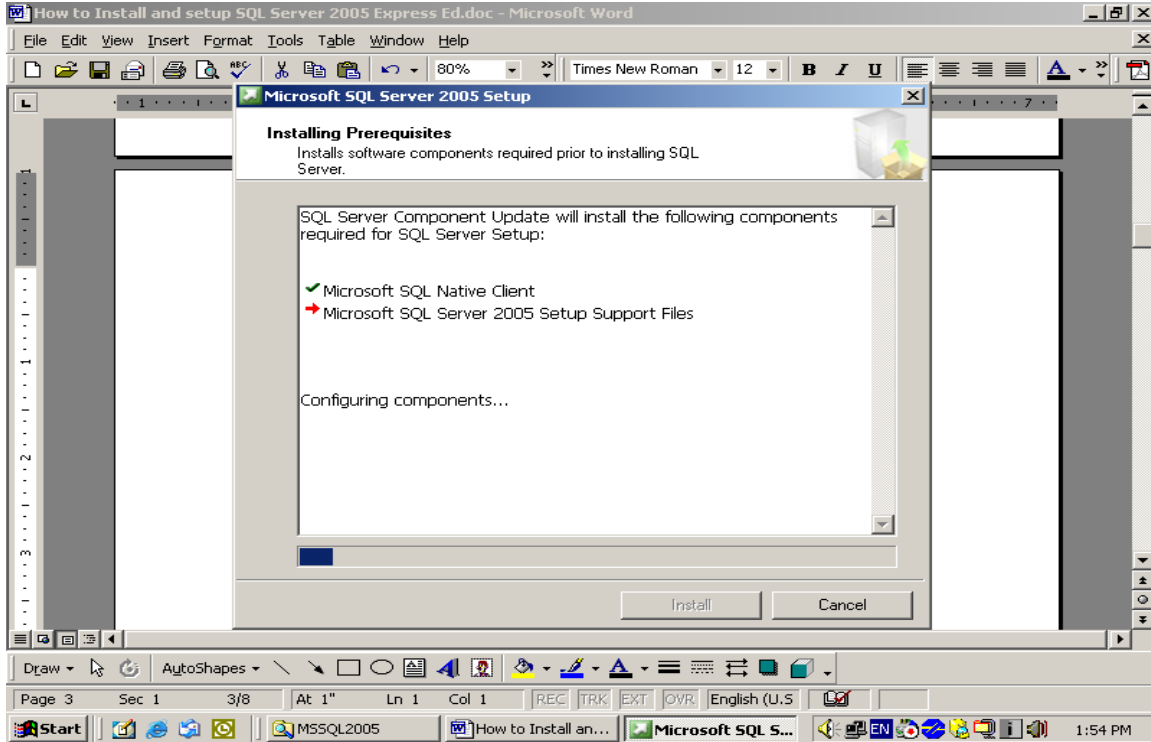
Step2: Select the option “I Accept the Licensing Terms....” And press NEXT



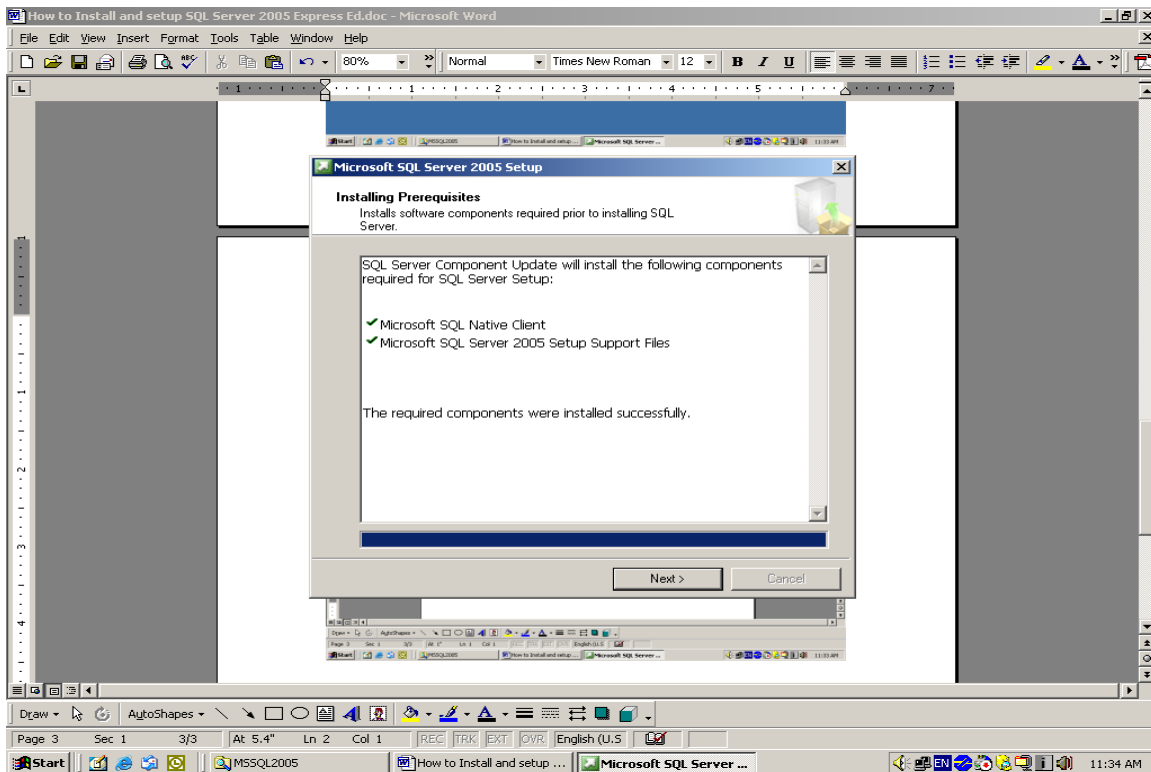
Step 3: Press INSTALL button from the below screen



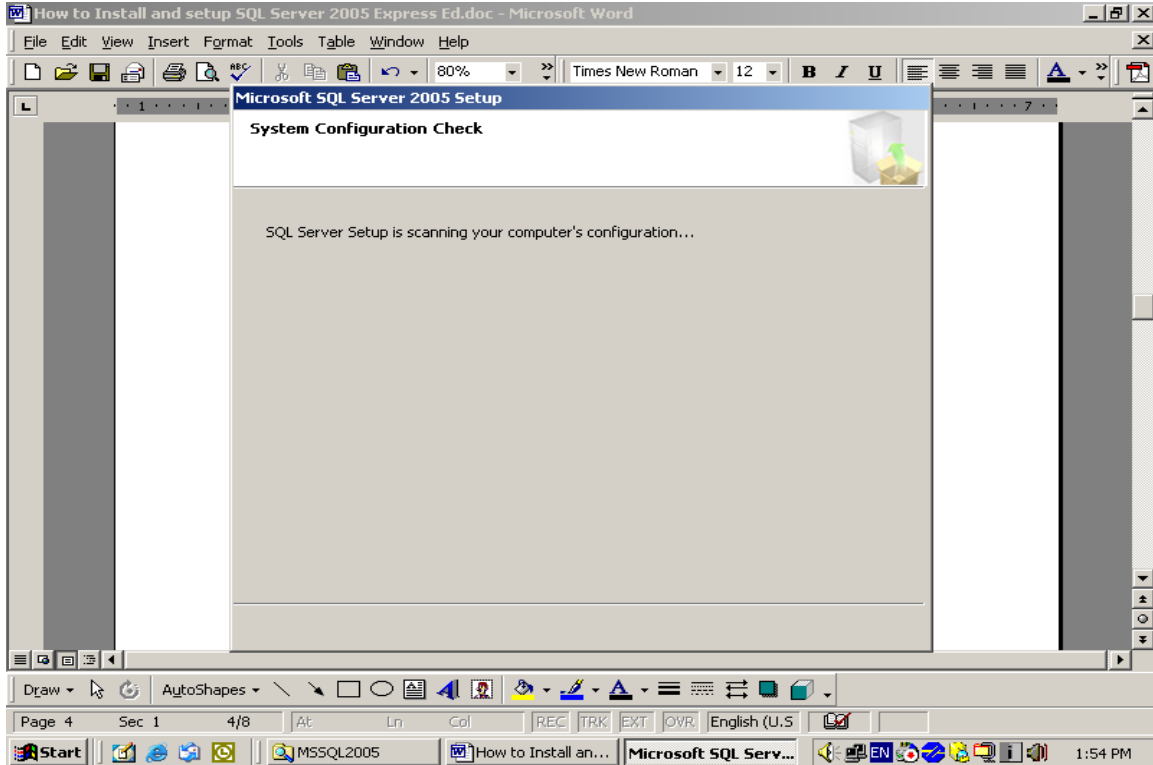
Step 4: Installation will be started and following screen will appear



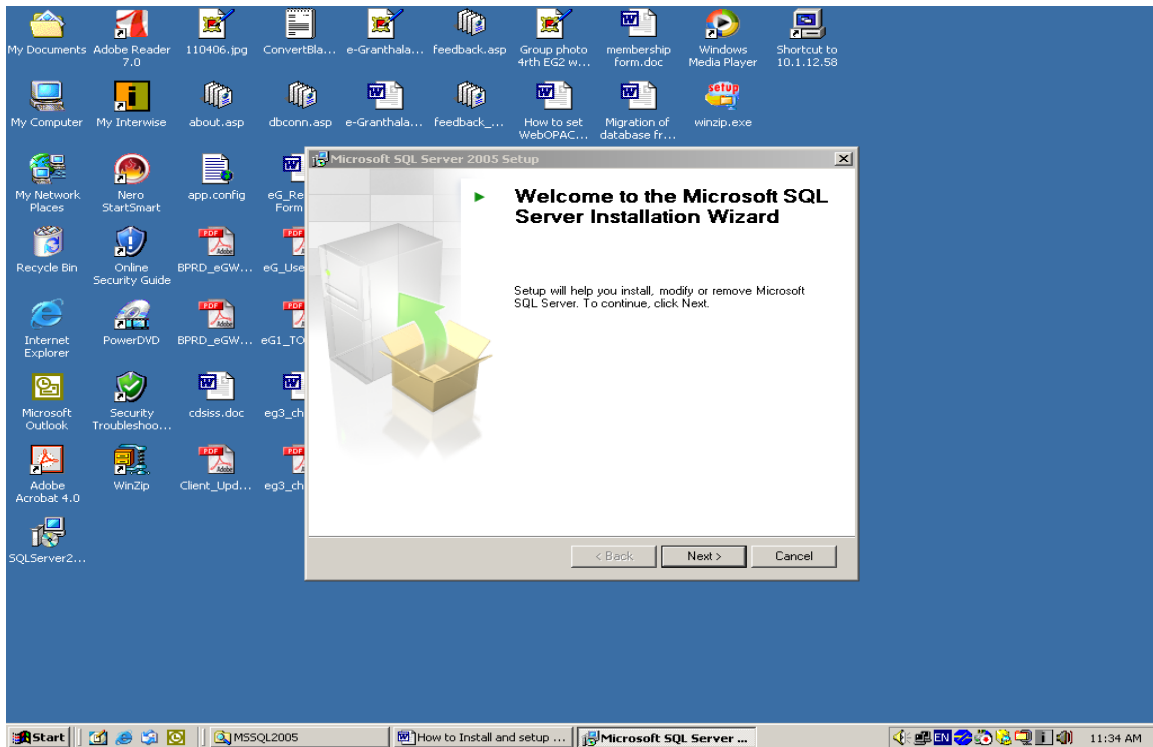
Step 5: Press NEXT button to continue from the following screen



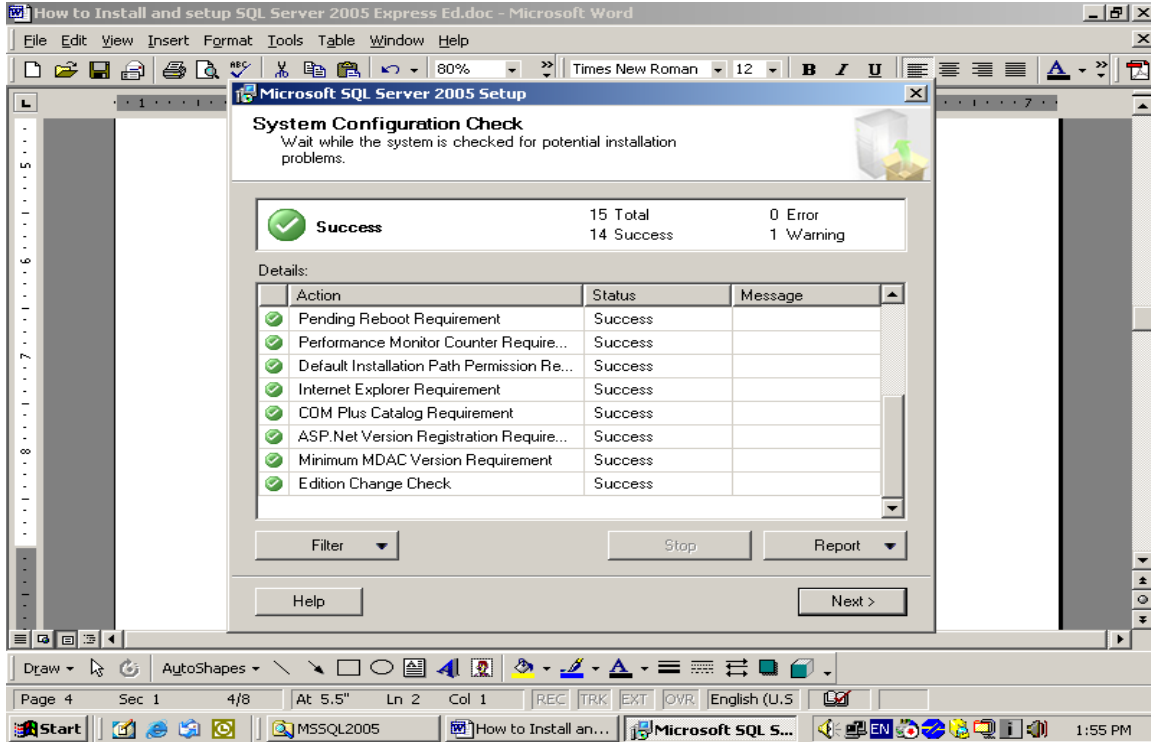
Step 6: Installation will be in progress and following screen will appear



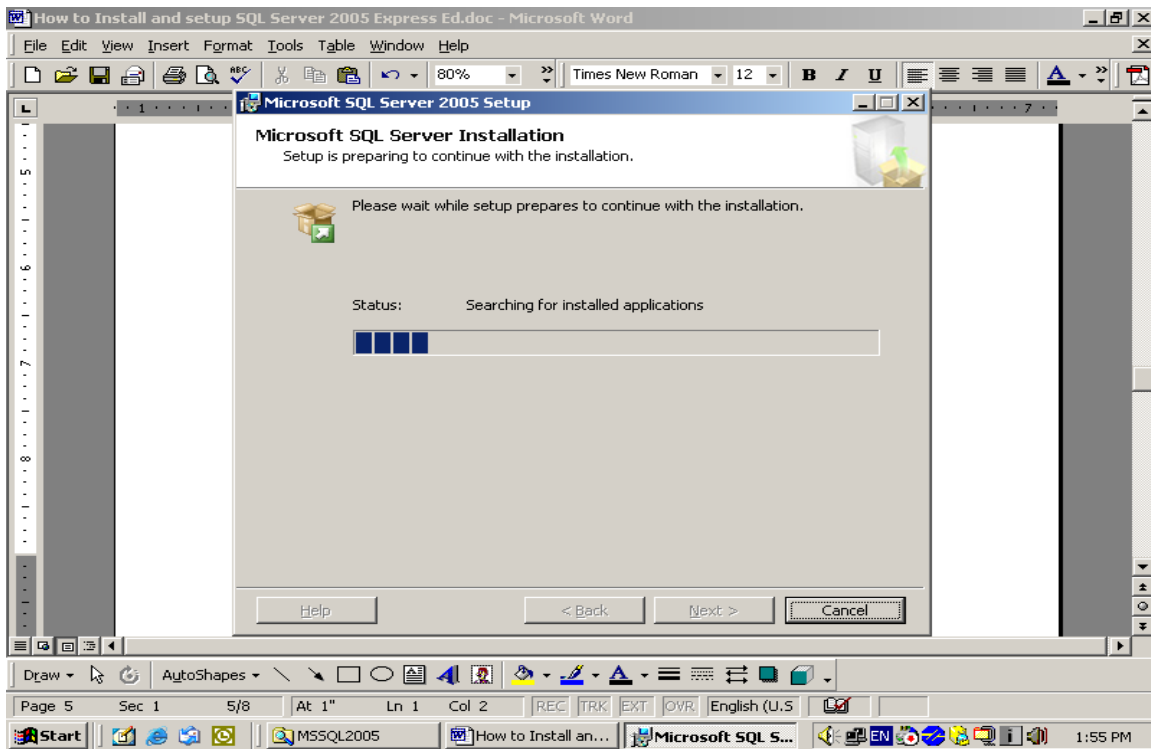
Step 7: Press NEXT from the following screen



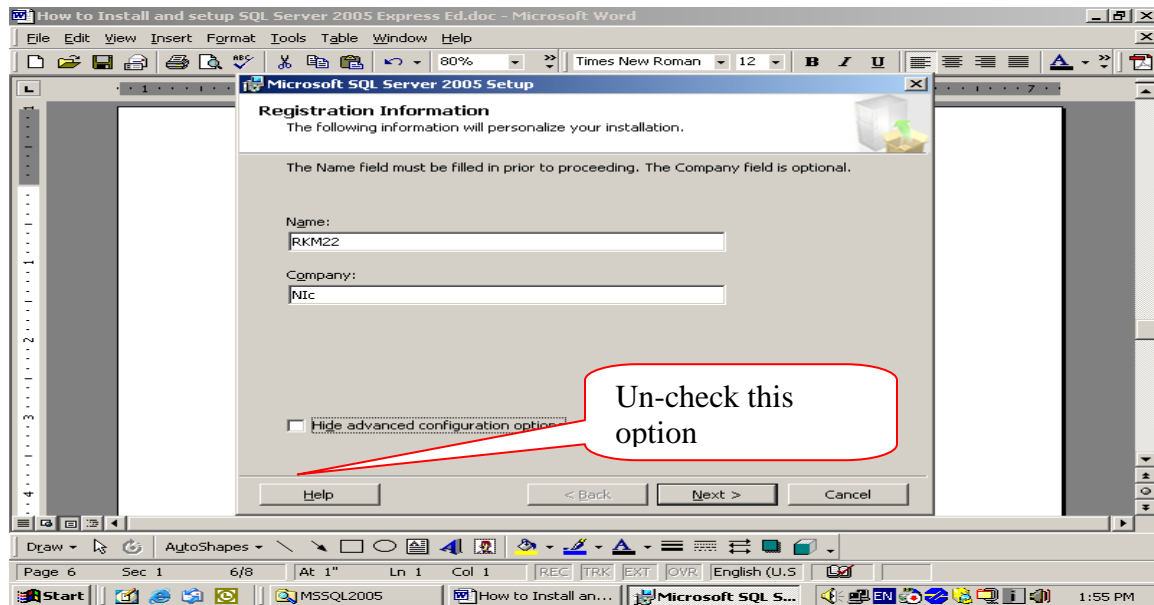
Step 8: Press NEXT from the following screen



Step 9: following screen will appear

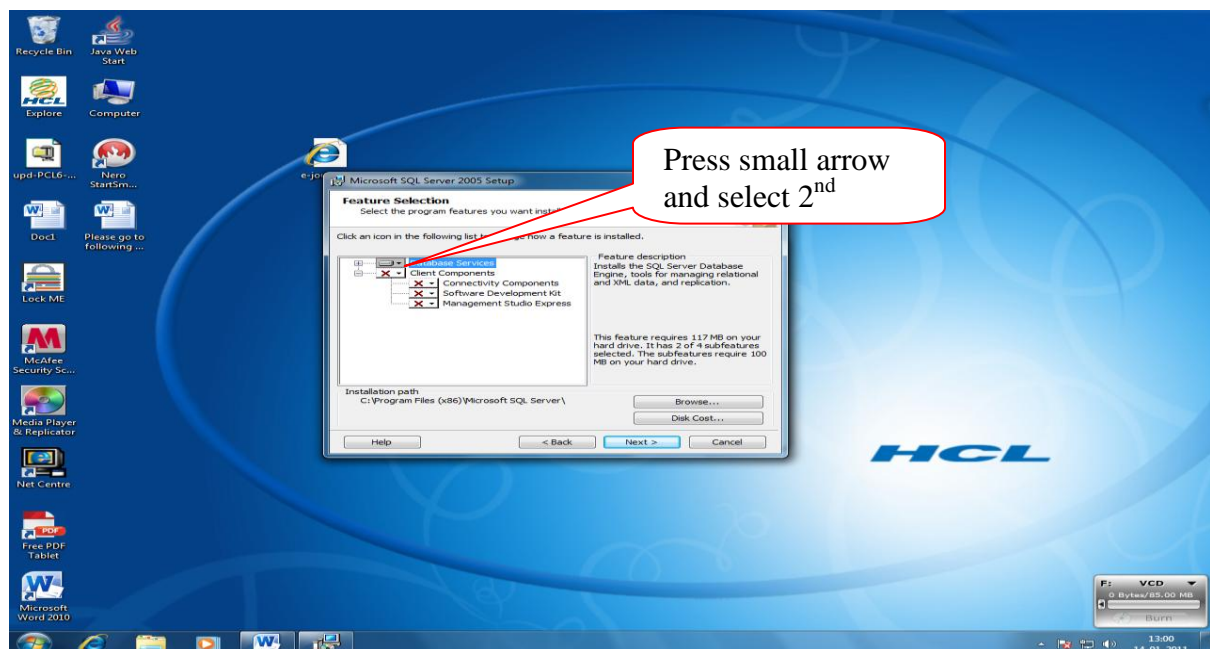


Step 10: From the following screen uncheck the option – “Hide advance configuration option” and press NEXT

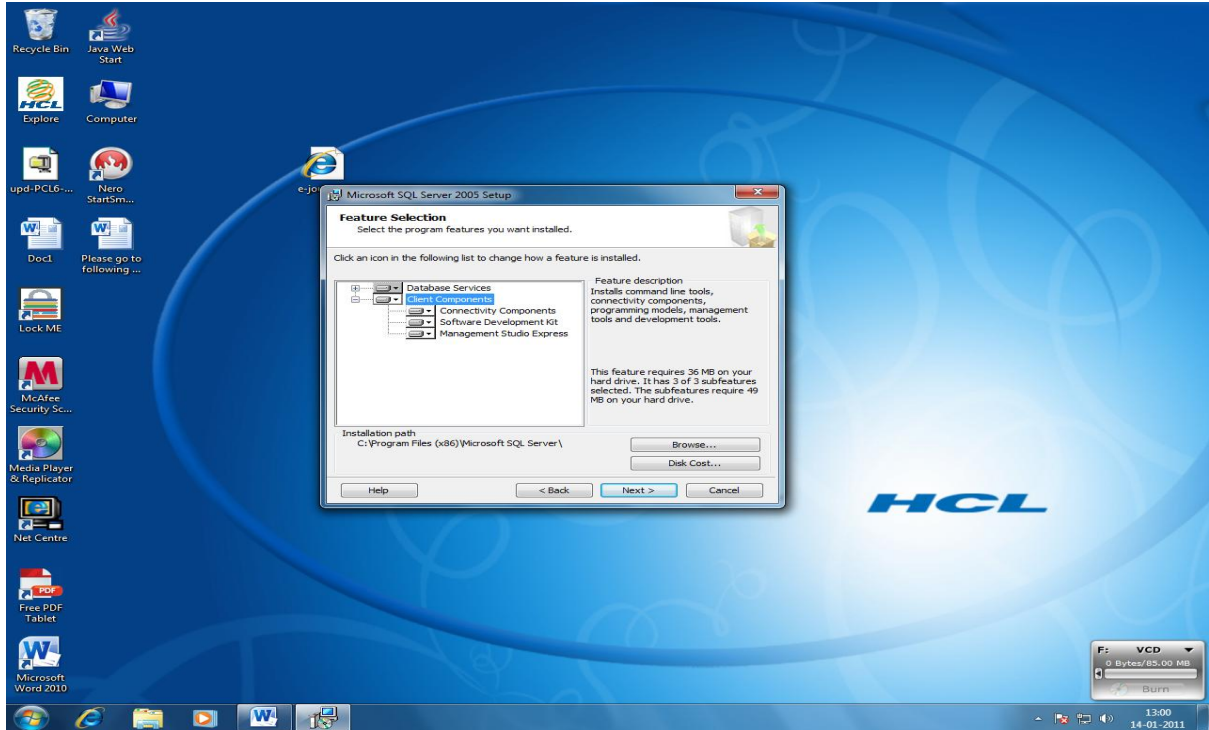


Step 11: Select all the features to installed from the following screen. For selecting all the features one by one press the small arrow sign just near to “red Cross” and select “This feature will be installed...”.’

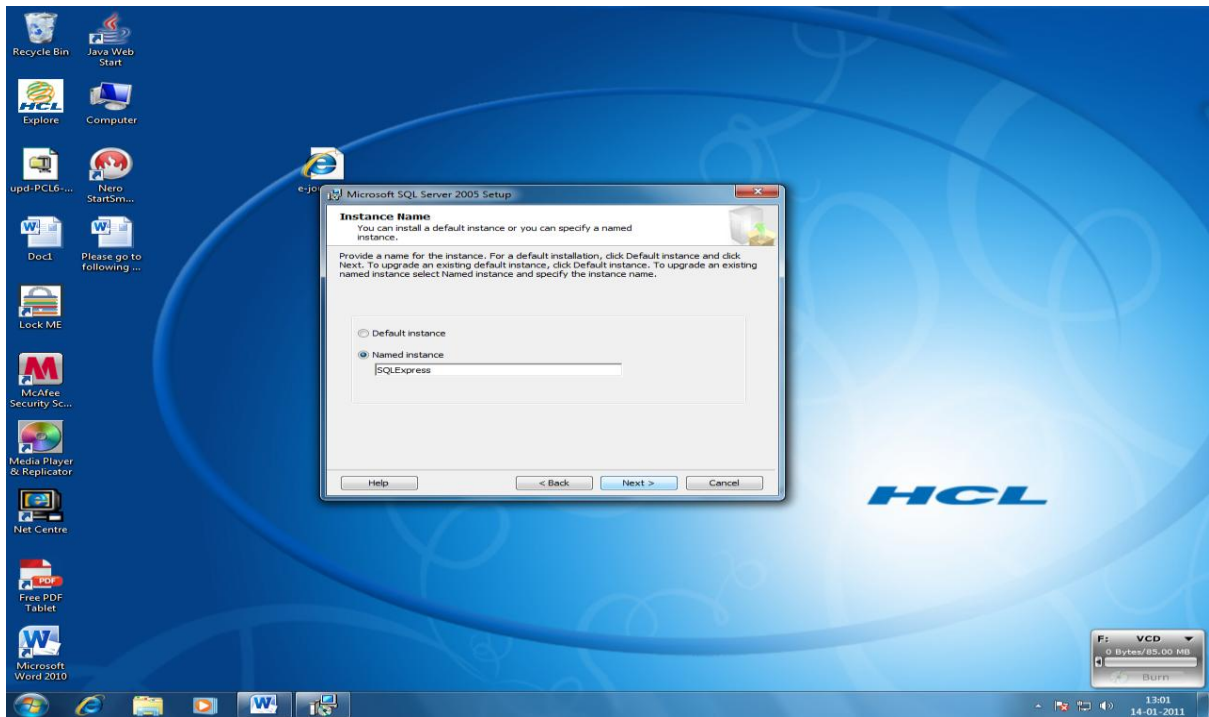
NOTE: The red cross shows here that this feature will not be installed on this PC. Therefore, it is suggested that you must include all the components from this screen and no red sign must be there on this screen



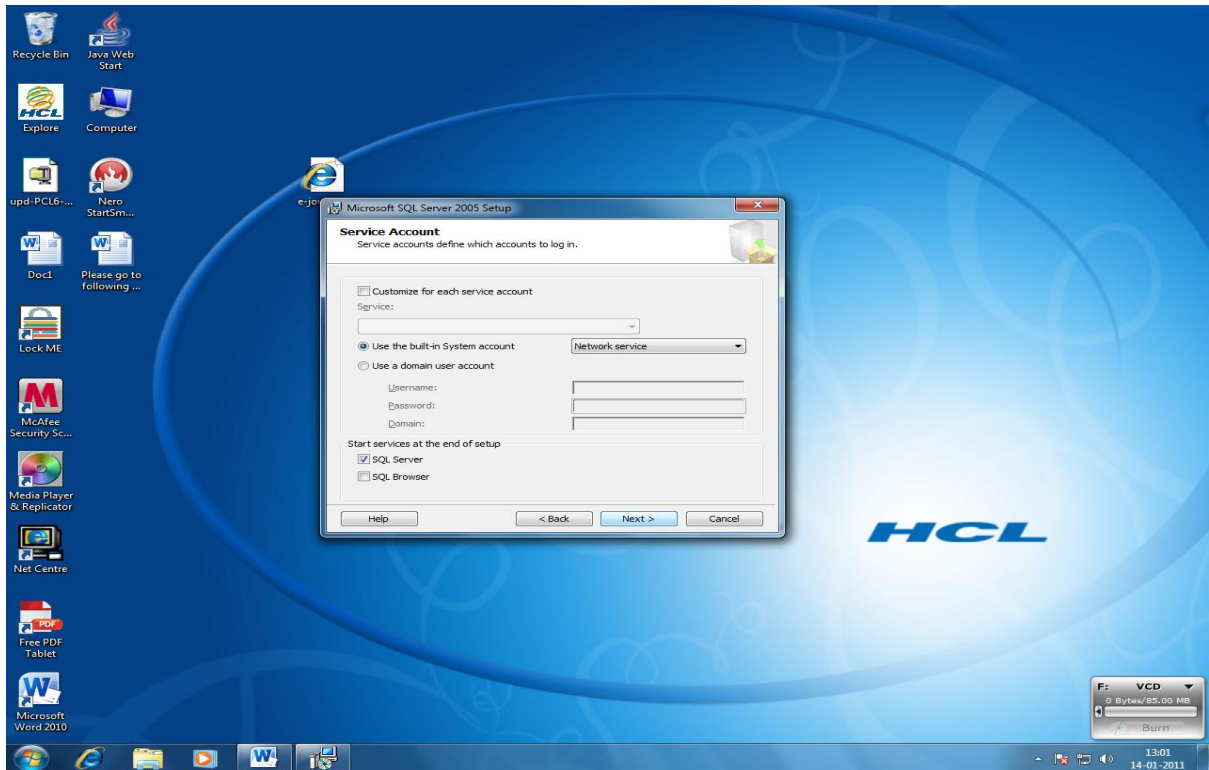
Step 12: After selection of all the features, the screen will look like the given below



Step 13: Keep the option as it is and press NEXT

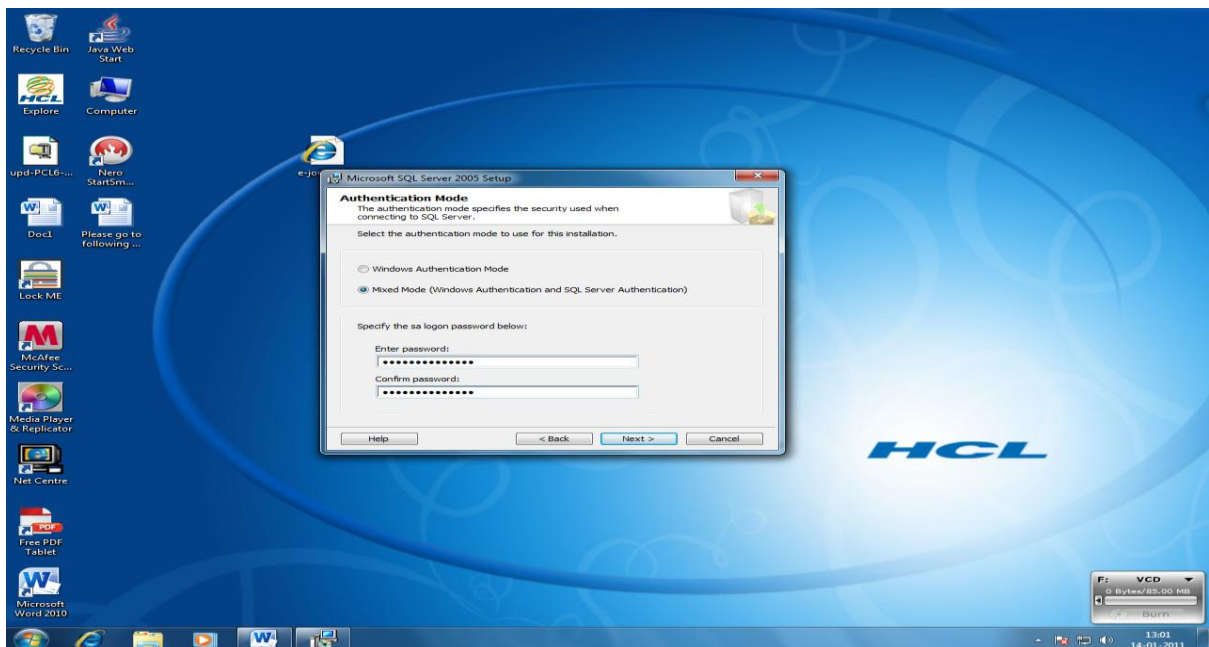


Step 14: Select option “Use the Built-in System account (Local System)” and select the option from the bottom “ SQL Server” and press NEXT

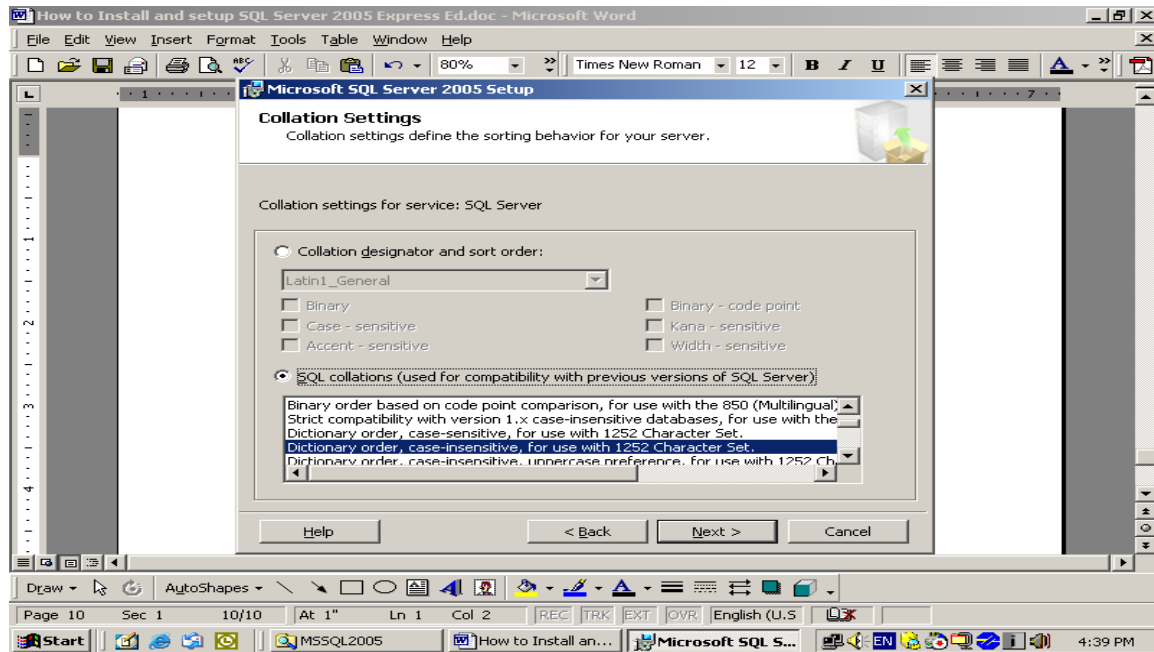


Press INSTALL button

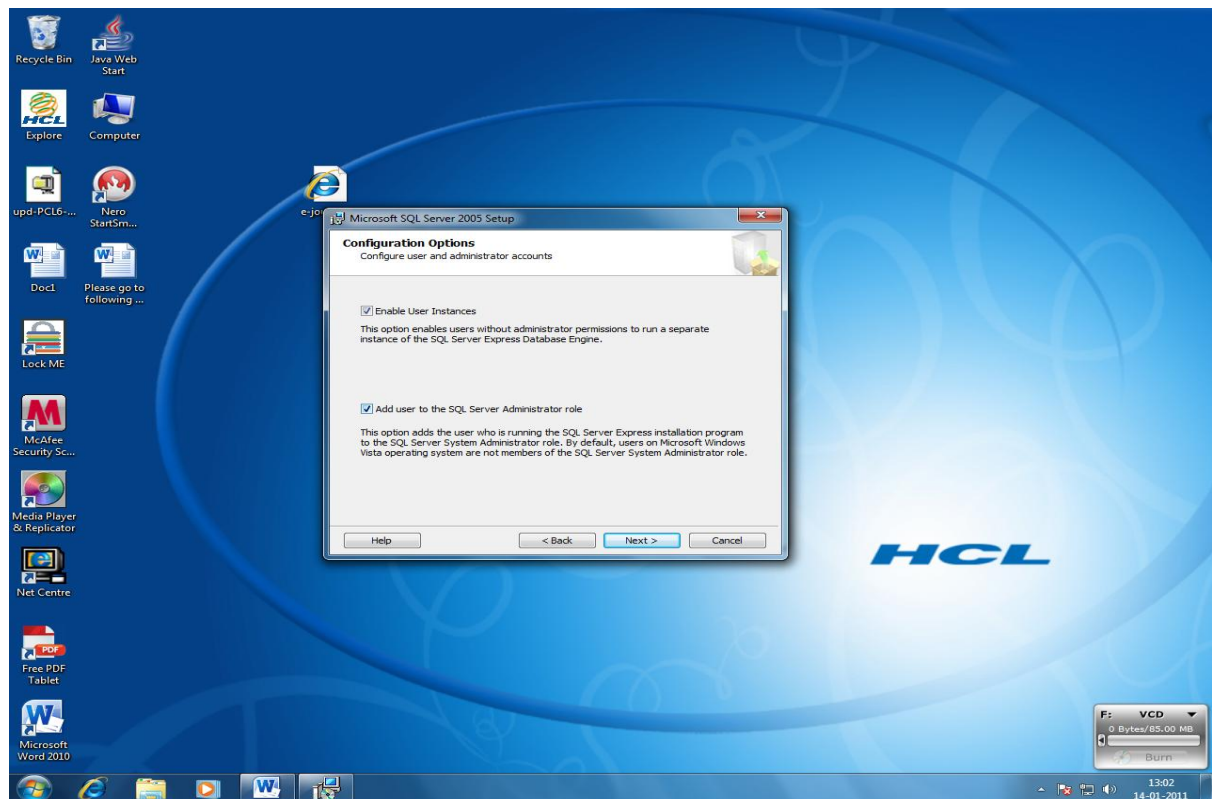
Step 15: Select the option “Mixed Authentication Mode” from the following screen and enter password/re-password **granth#xyz\$123** and press NEXT – this password must be noted down and it will require to work with SQL Server 2005



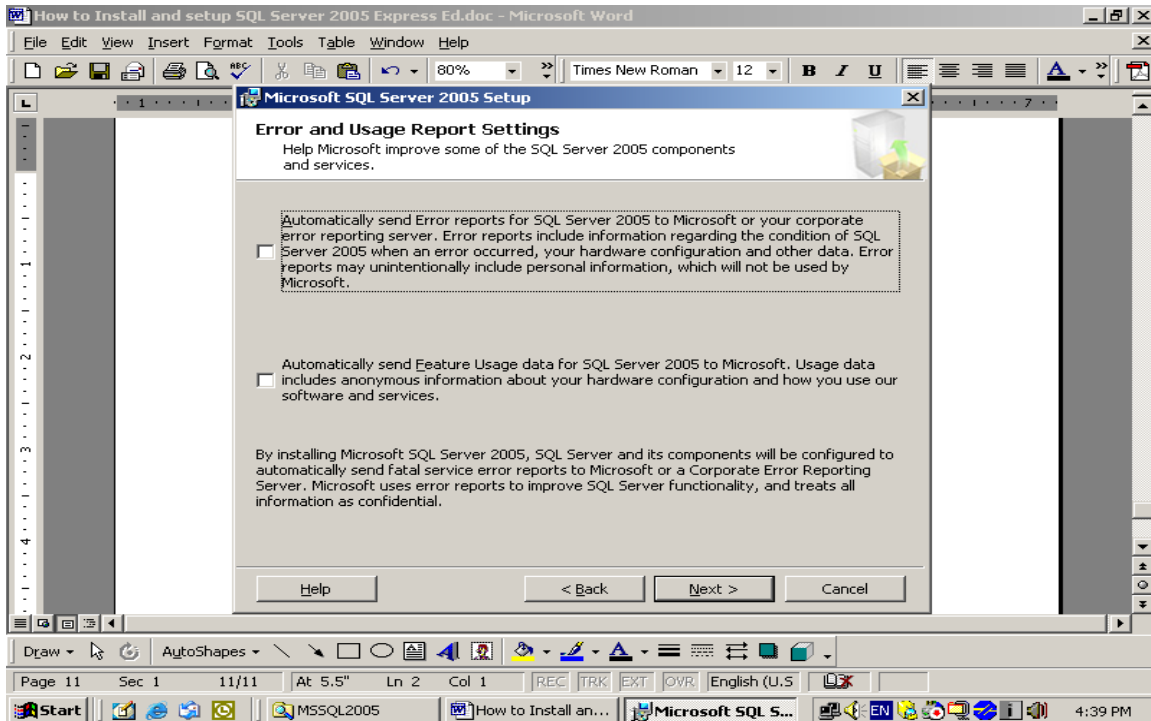
Step 16: Keep everything in default, press NEXT from the following screen



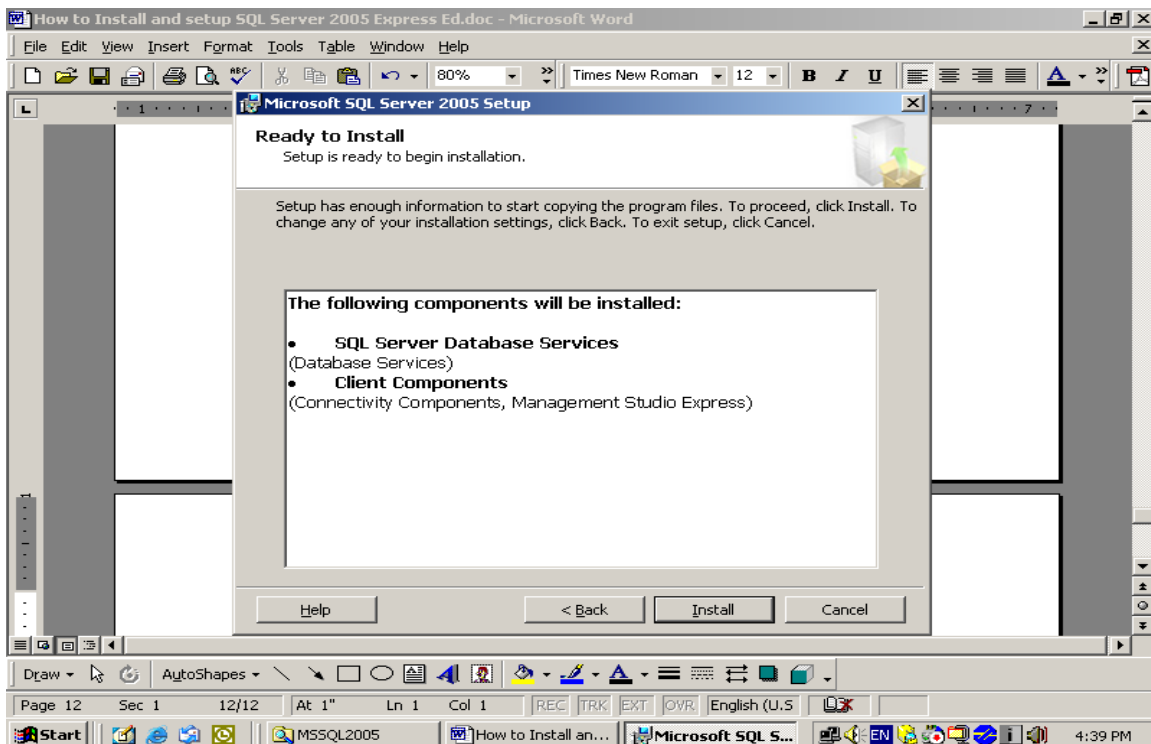
Step 17: Select the option “Enable User Instances “ from the following screen and put check box before the option – “Add User to the SQL Server Administrator Role” and finally press NEXT



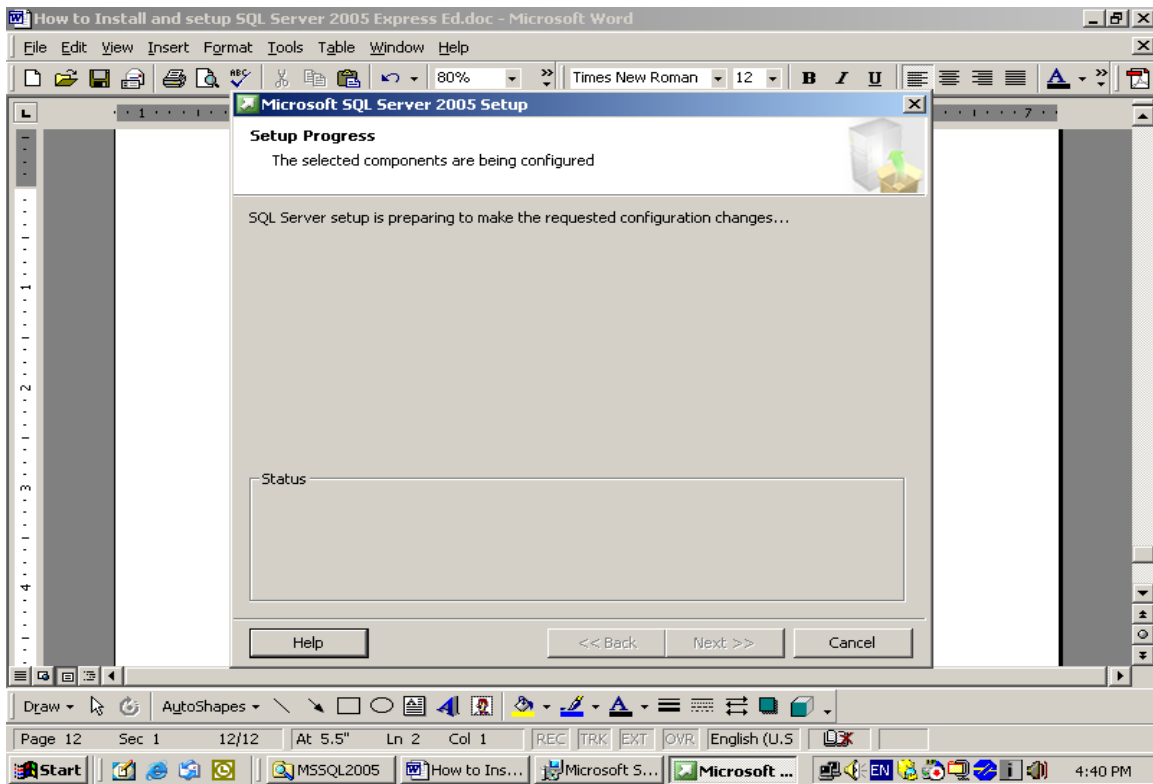
Step 18: Press NEXT on the following screen



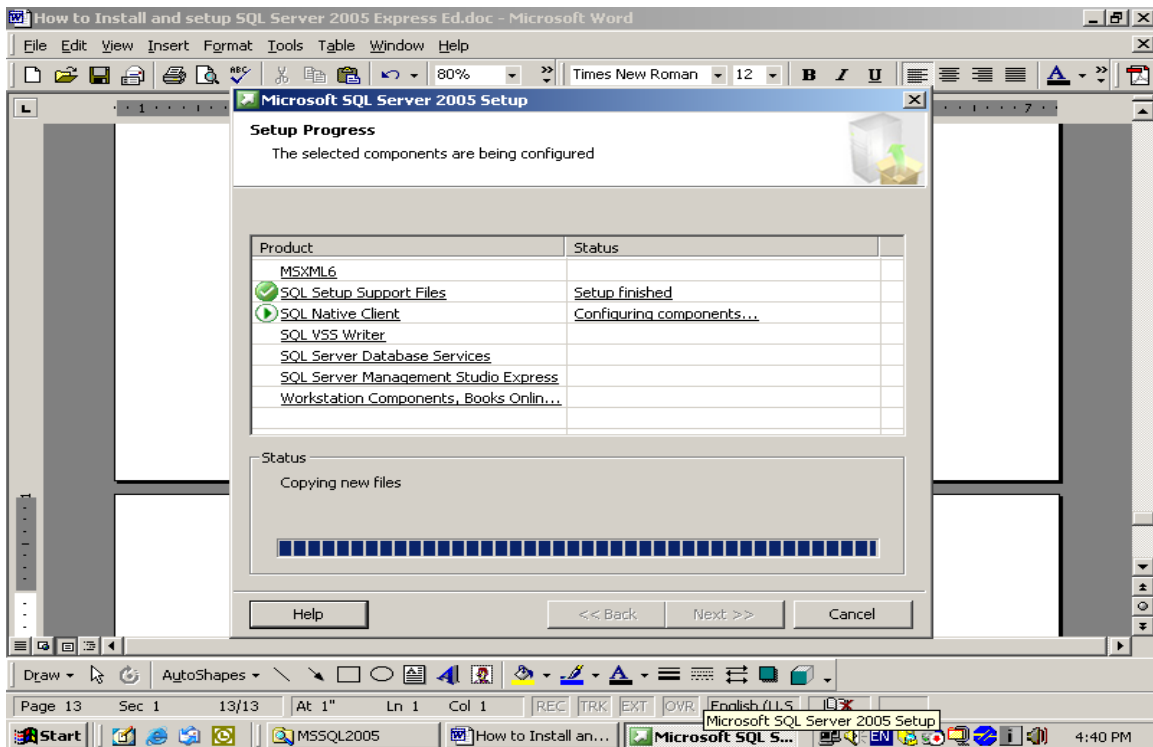
Step 19: Press INSTALL on the following screen

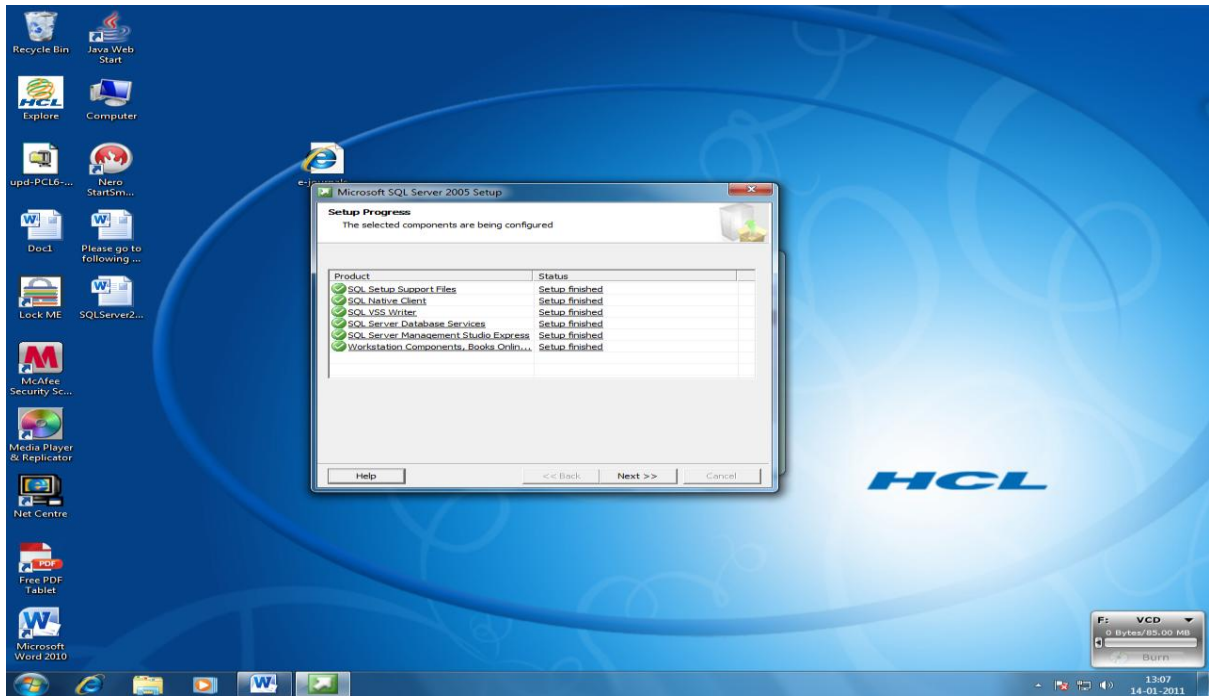


Step 20: Installation will be started



Step 21: Installation will be in progress as in the following screen





Step 22: Press NEXT button and then FINISH button and re-boot the PC.

NOTE: now after installation for the MS SQL Server 2005, you can setup the MS SQL Server as given in the next portion

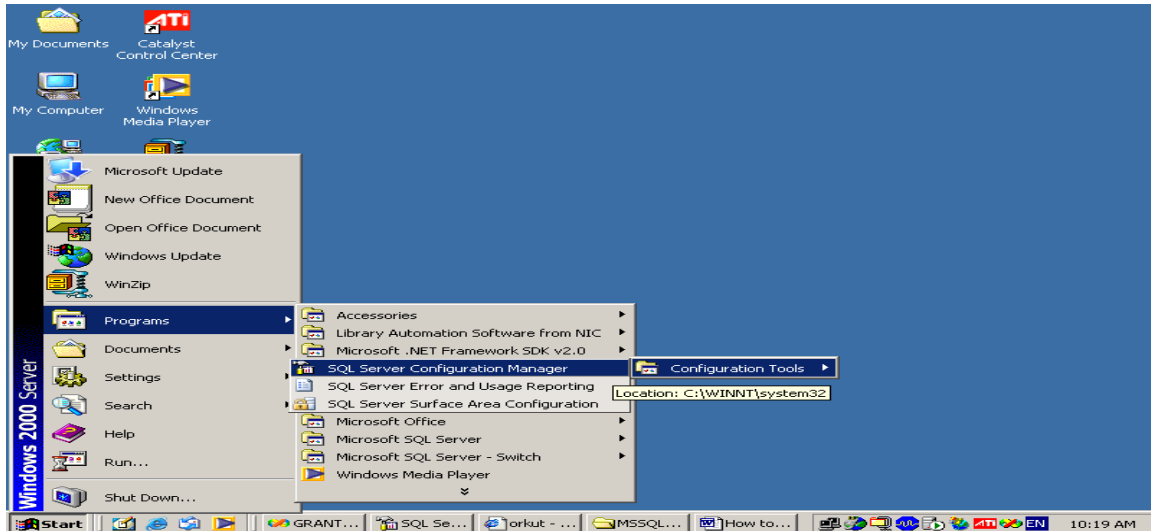
NOTE: After successful installation of the software , re-boot the system

1.5. How to setup the SQL Server 2005 after Installation

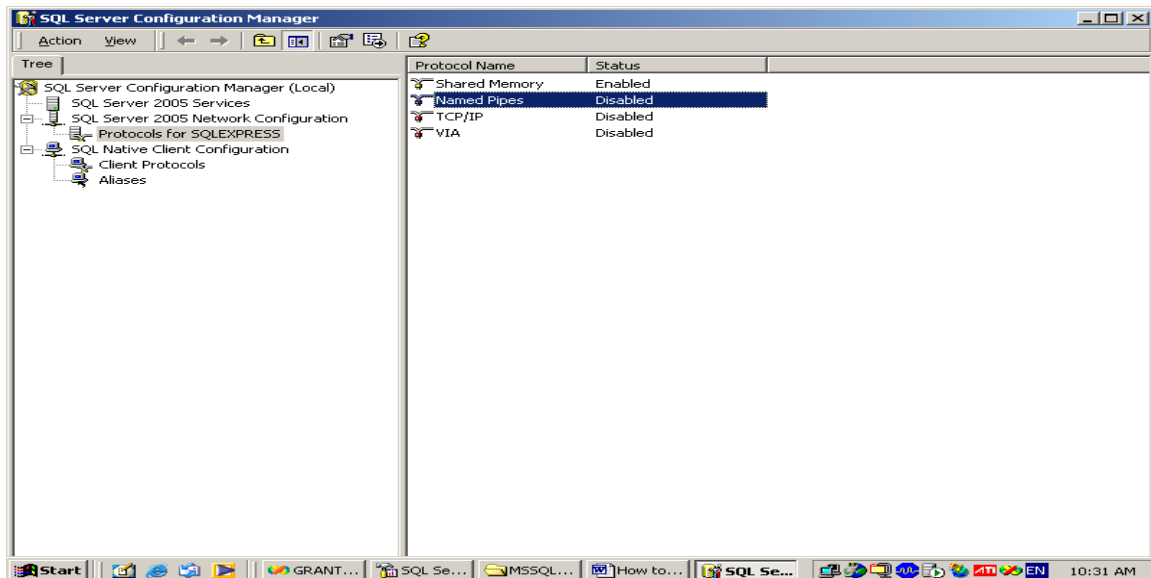
Step 1: Press START button of the Windows (in the Left-bottom corner) >> Programs >> Microsoft SQL Server 2005 >> Configuration tools (as given in the below screen)

Out of three , following two sub-menu are there under Configuration manager:

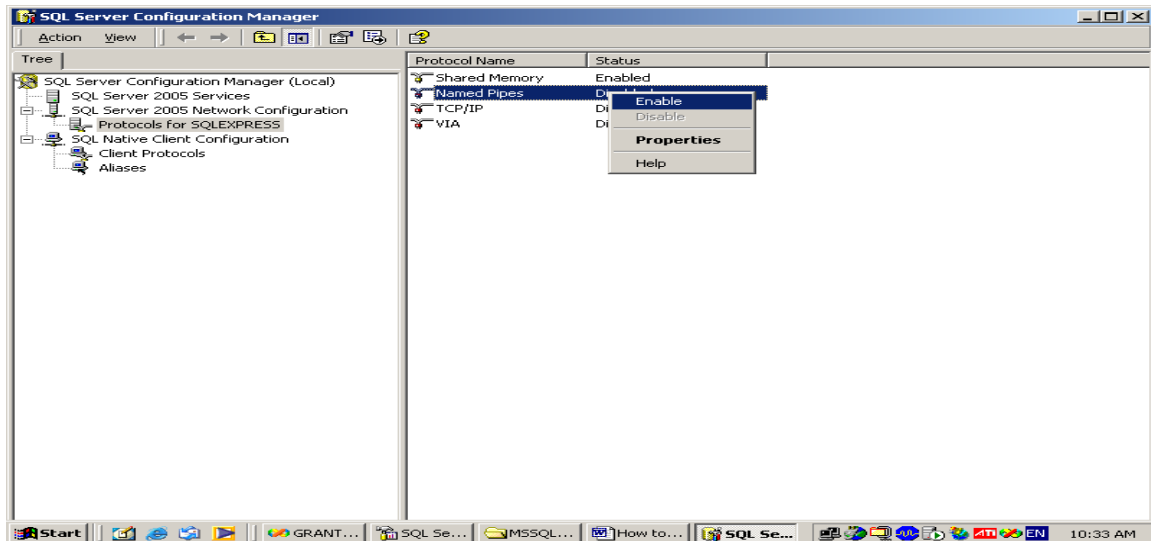
1. SQL Server Configuration Manager
2. SQL Server Surface Area Manager



Step 2: First click the sub-menu “SQL Server Configuration Manager”, following screen will appear



Step 3: Expand all the options in the left and select the component, one by one, in the right screen, change the “DISABLE” to “Enabled” by right clicking the option



NOTE: make the following services Enabled

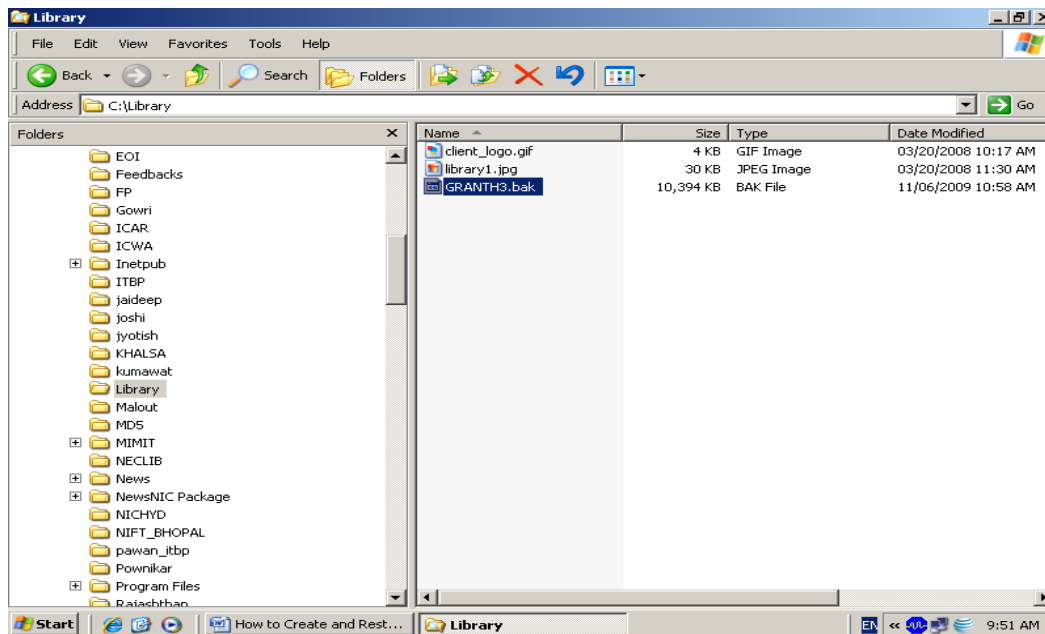
1. Named Pipes
2. TCP/IP

Step 3: Close the Screen

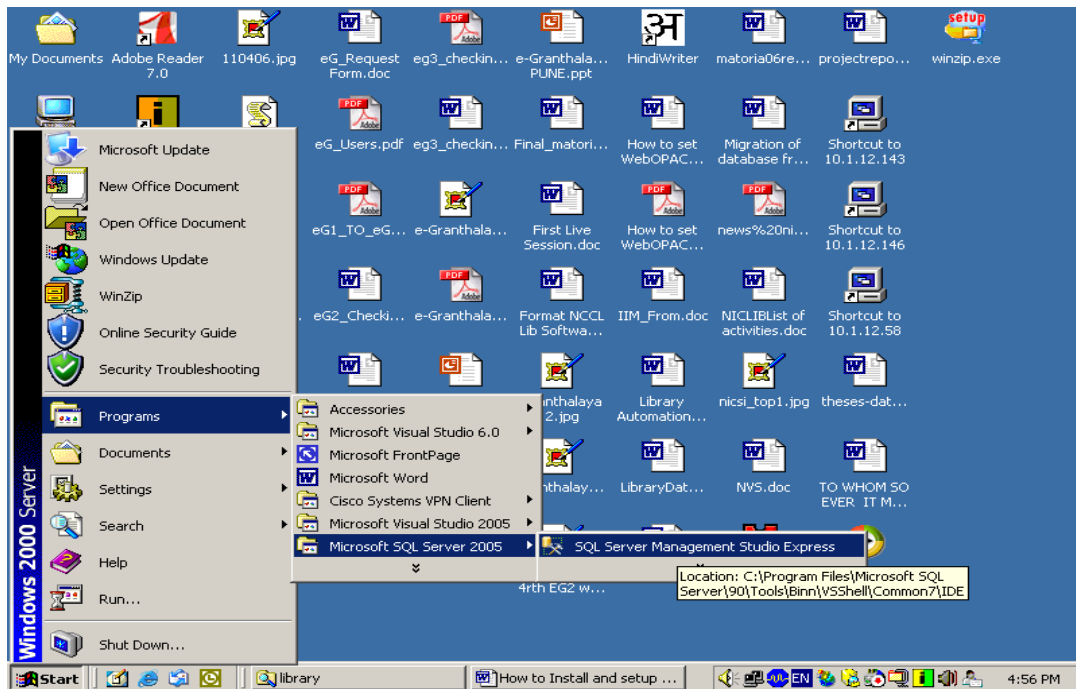
NOTE: After the setting up of the MS SQL Server, re-boot the system

1.6. How to Create and Restore GRANTH3 database

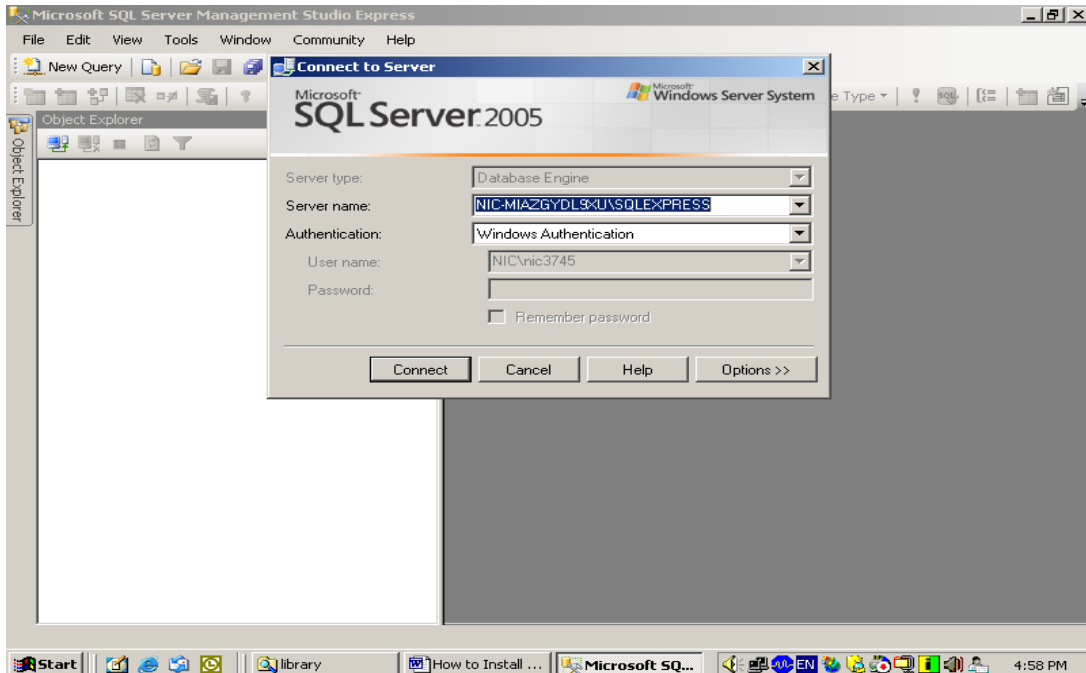
2. After Installation and Setup of the MS SQL Server 2005, re-boot your PC and then follow the steps for creating and re-storing the GRANTH3 database from the database_bakup file available in the software CD (e-Granthalaya CD in Database folder) or in your PC
3. Copy the database backup (GRANTH3.bak) file from the CD (Database Folder) in the library folder under C drive (C:\Library\). In case Library folder is not available, please create a new folder in C drive and re-name it as LIBRARY



4. Go to **START >> PROGRAMS >> MS SQL Server 2005 >> SQL Server Management Studio** and Click it as given below:

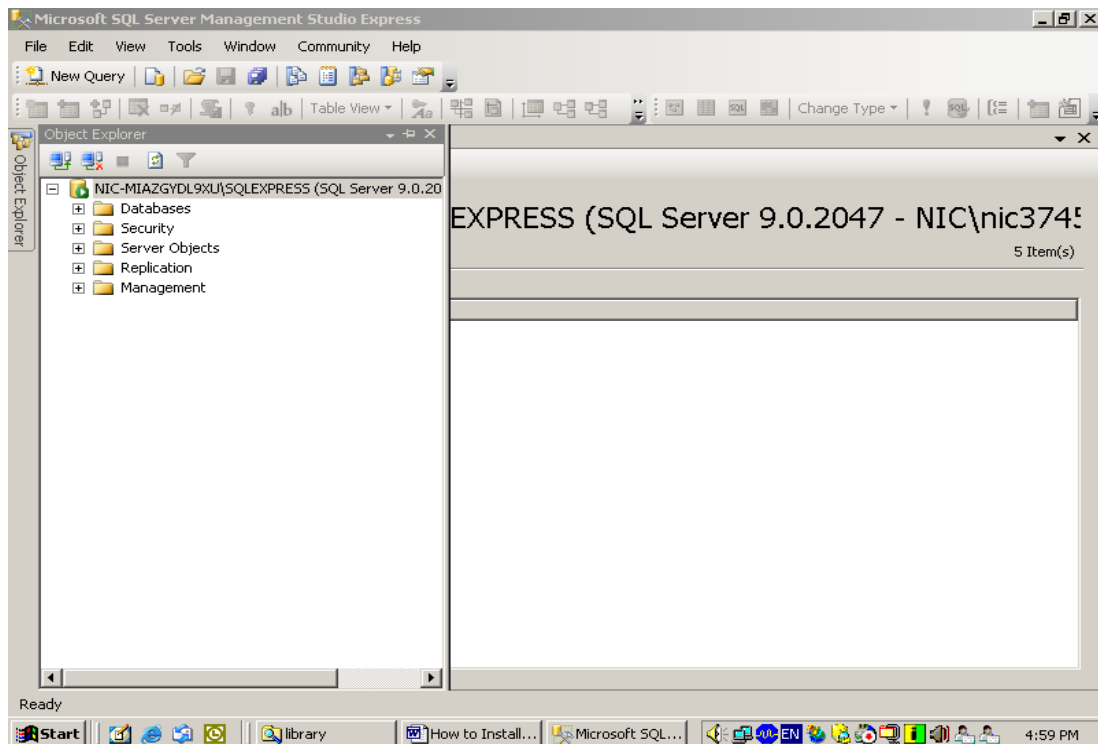


5. The MS SQL Server management studio will appear . It will connect your SQL Server and Windows authentication (in Default)

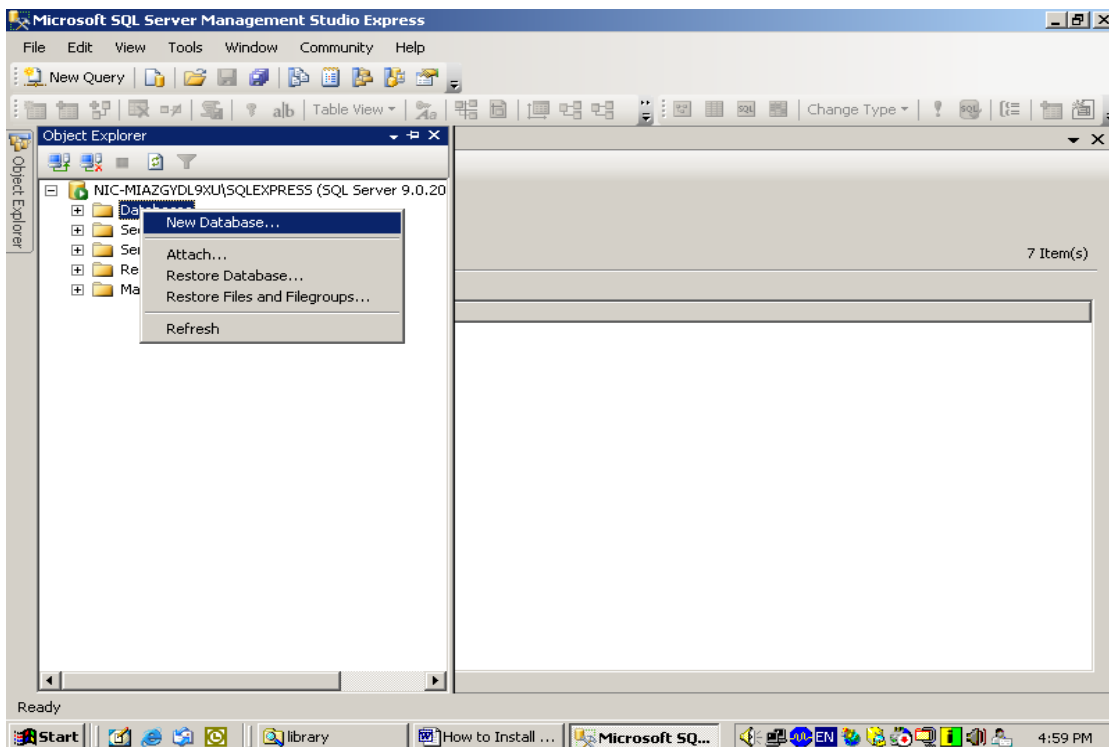


NOTE: In case it is Windows Server 2008/Vista/Win 7, you need to select “SQL Server Authentication” and type Login ‘sa’ and Password ‘**granth#xyz\$123**’

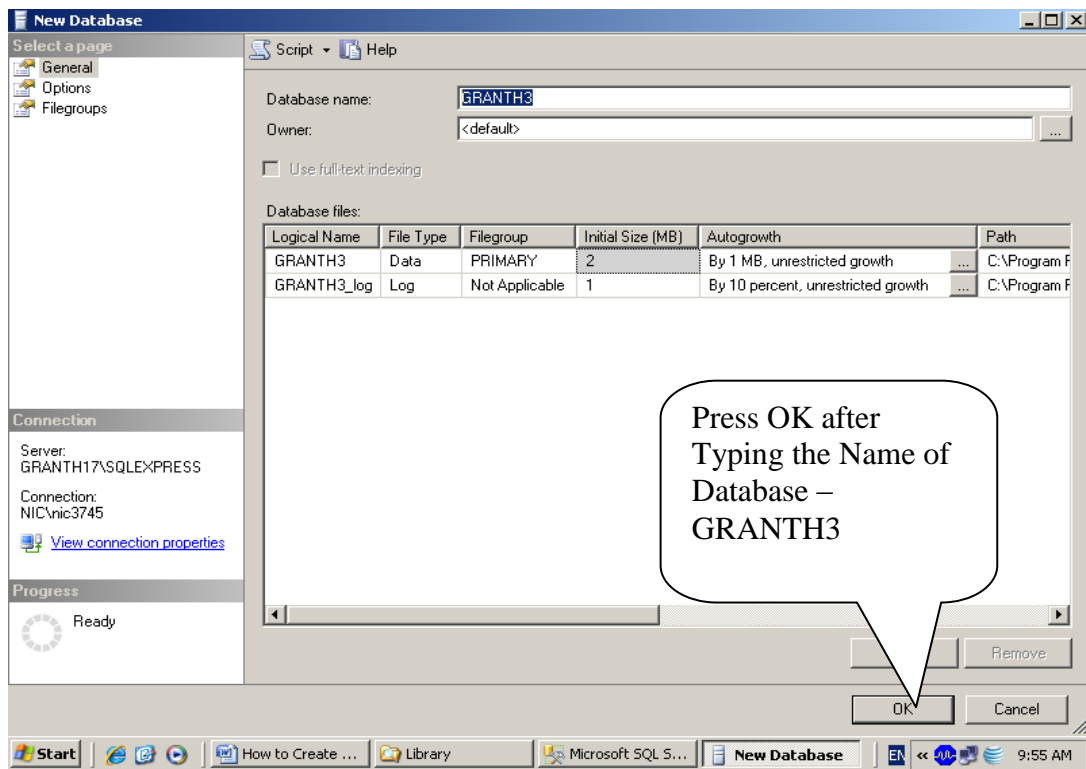
6. Press “Connect” button



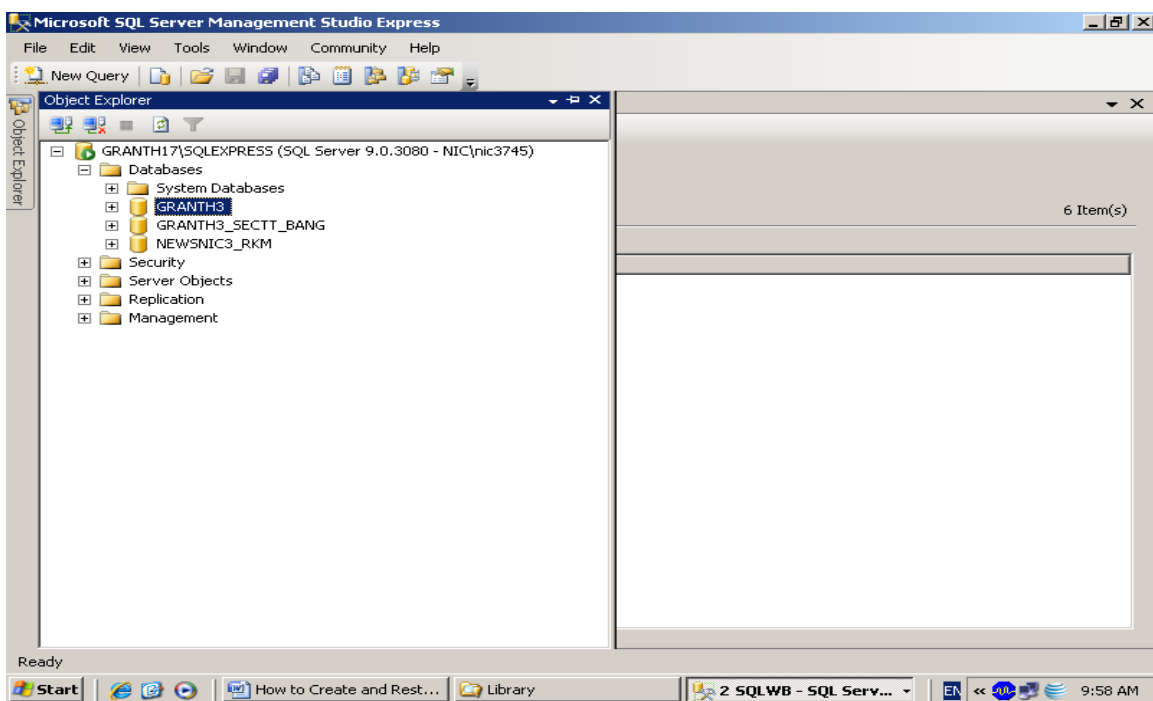
7. After connecting your SQL Server , you can create a new database here by right clicking the “Databases” object and select “New Database...”



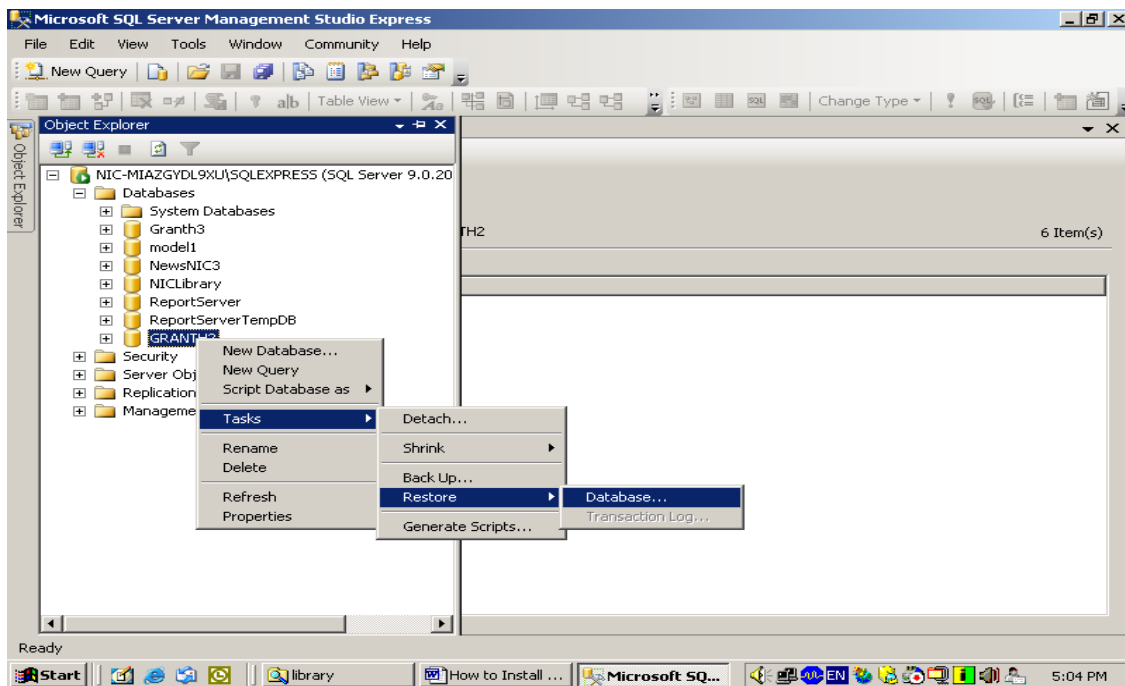
8. A new window will appear as given below, type the name of the database (GRANTH3) or something else and press OK button to create a new blank database



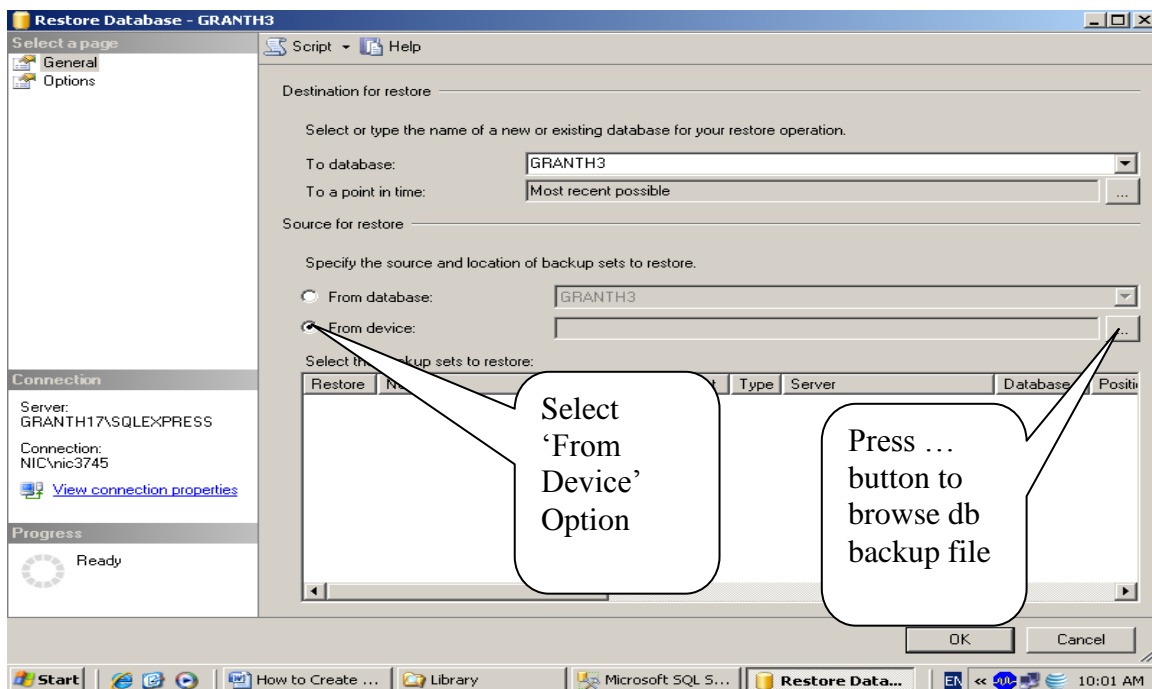
It will create the New Database GRANTH3 as shown in the following screen



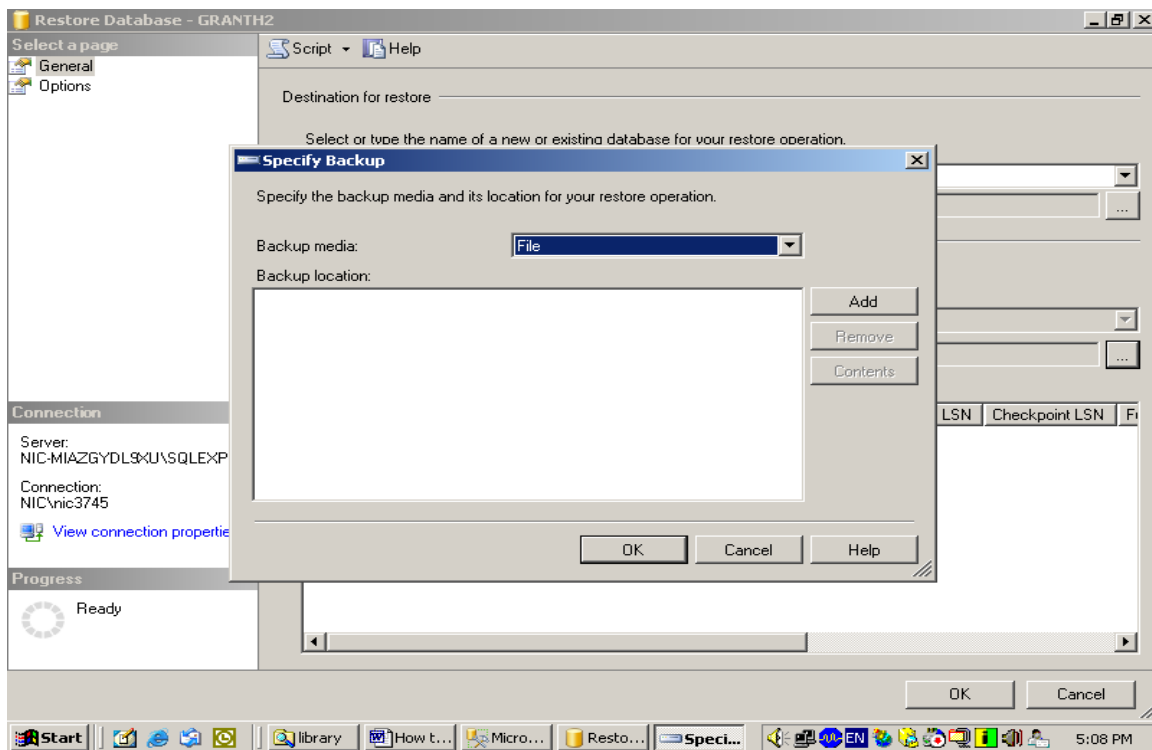
9. Here you will restore the newly created database with the backup file which you copied in the “C:\Library” folder vide Step no.2 . For restoring the database, right click your newly created database (GRANTH3) > Task>>Restore>>Database,



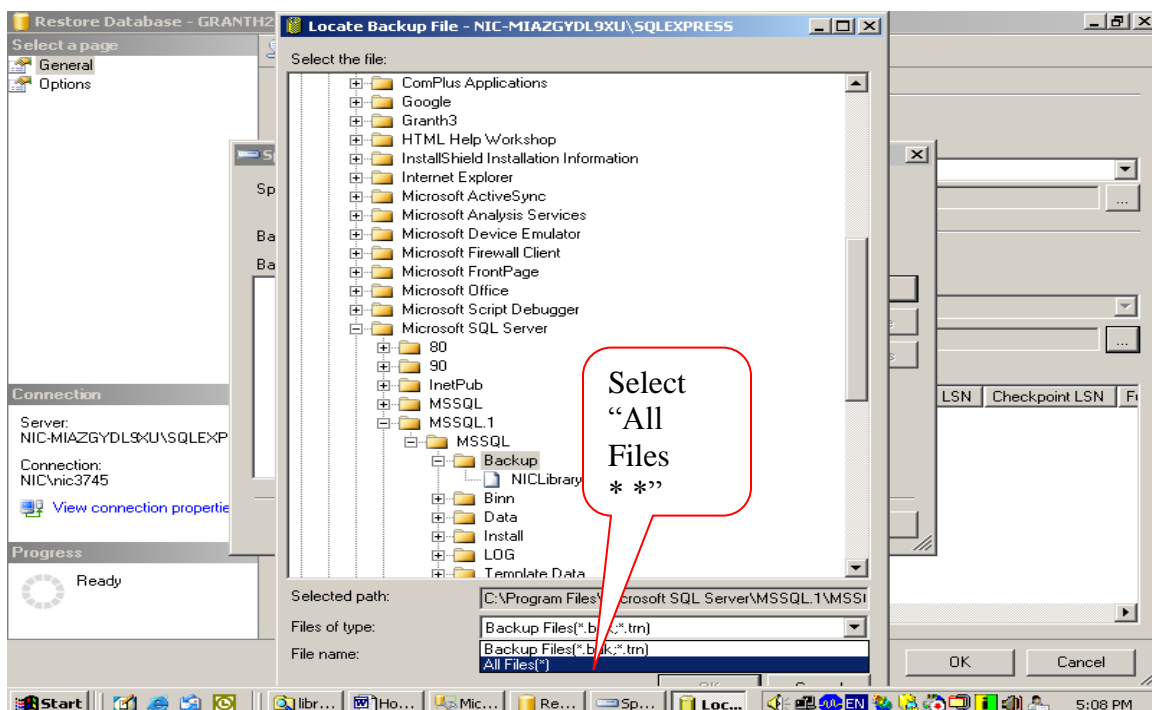
10. After clicking the above option, following screen will appear



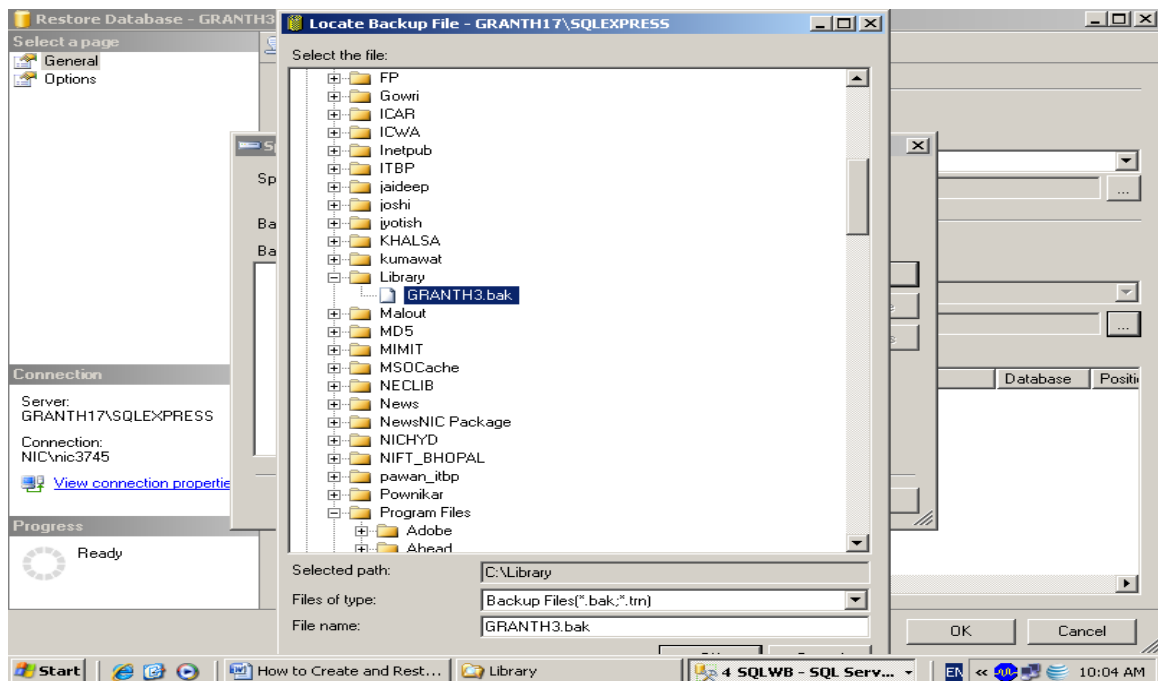
11. Select the “From Device” option from the above screen and pres ... (three dot button given in the right side of the screen against above selection, after pressing ... dot button following screen will appear



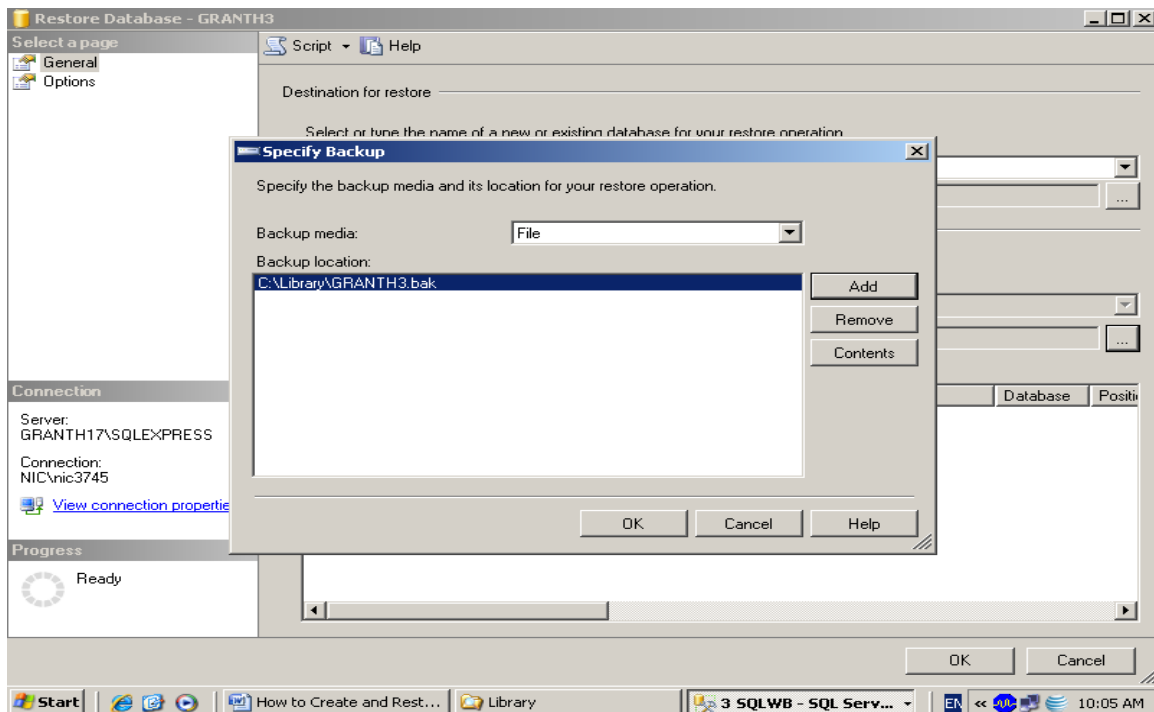
12. Press ADD button, following screen will appear



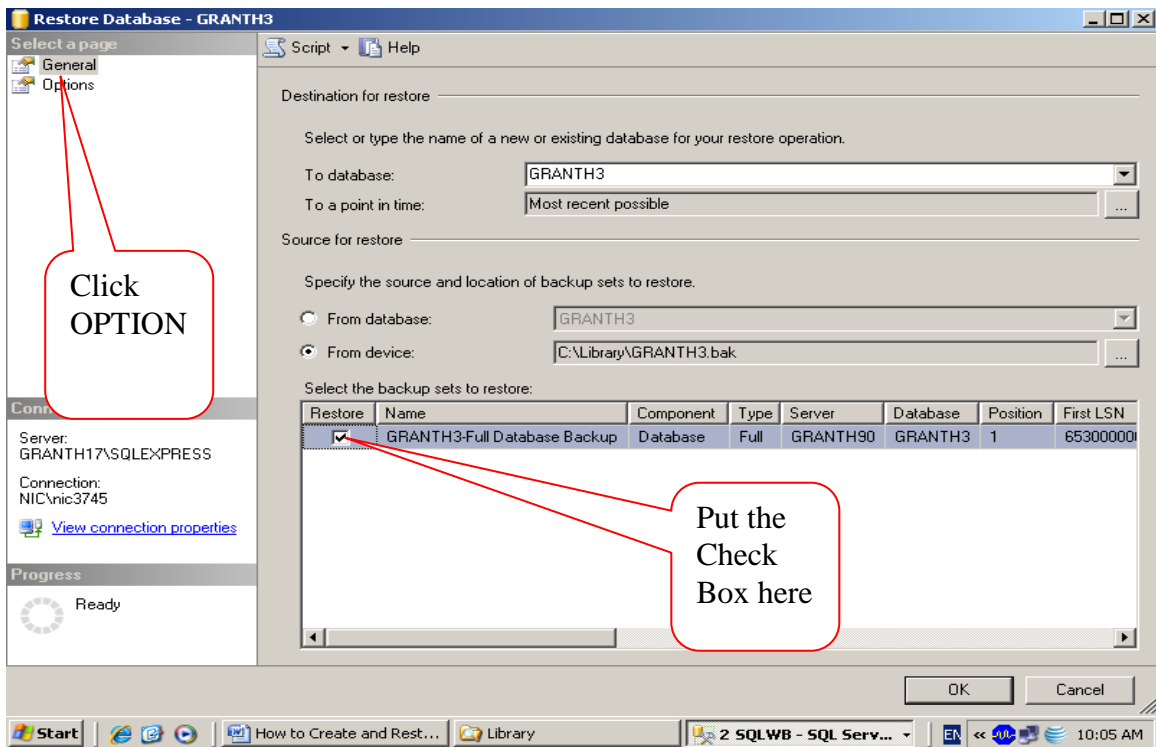
13. In the bottom part of the above screen , select the “All Files(*.*)” from the “Files of Type” and then select the backup file you just copied to “C:\Library” folder in the Step no.2 (browse the folders on your computer drives”



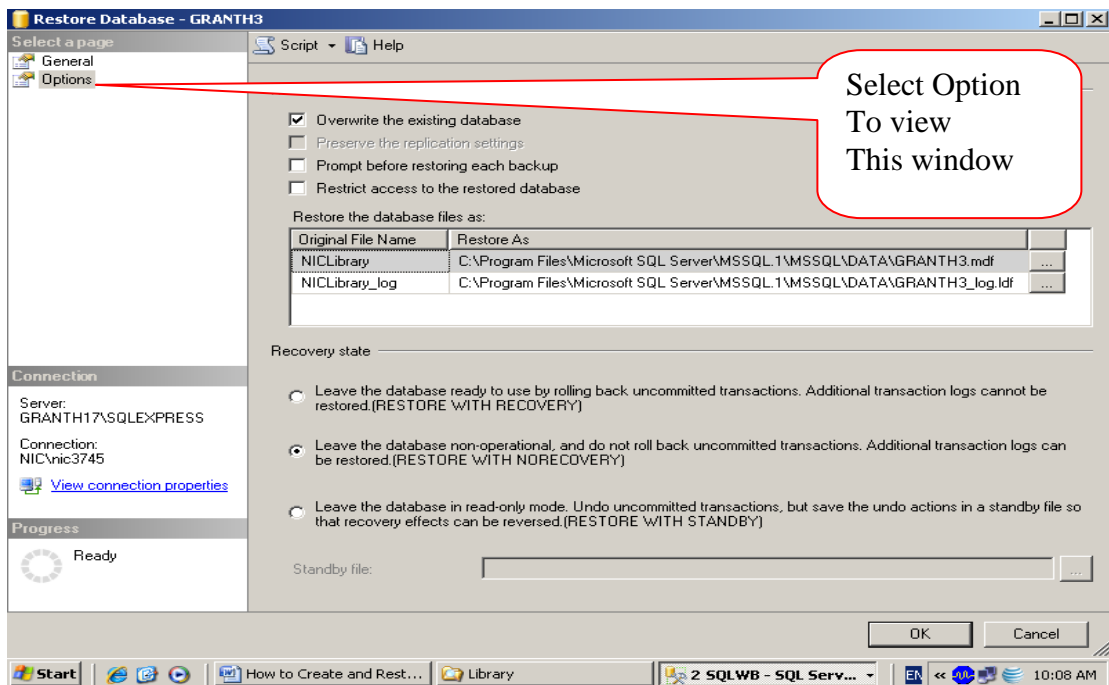
14. After selecting the backup file from the copied location , press OK button



15. Press OK again u will see the following screen

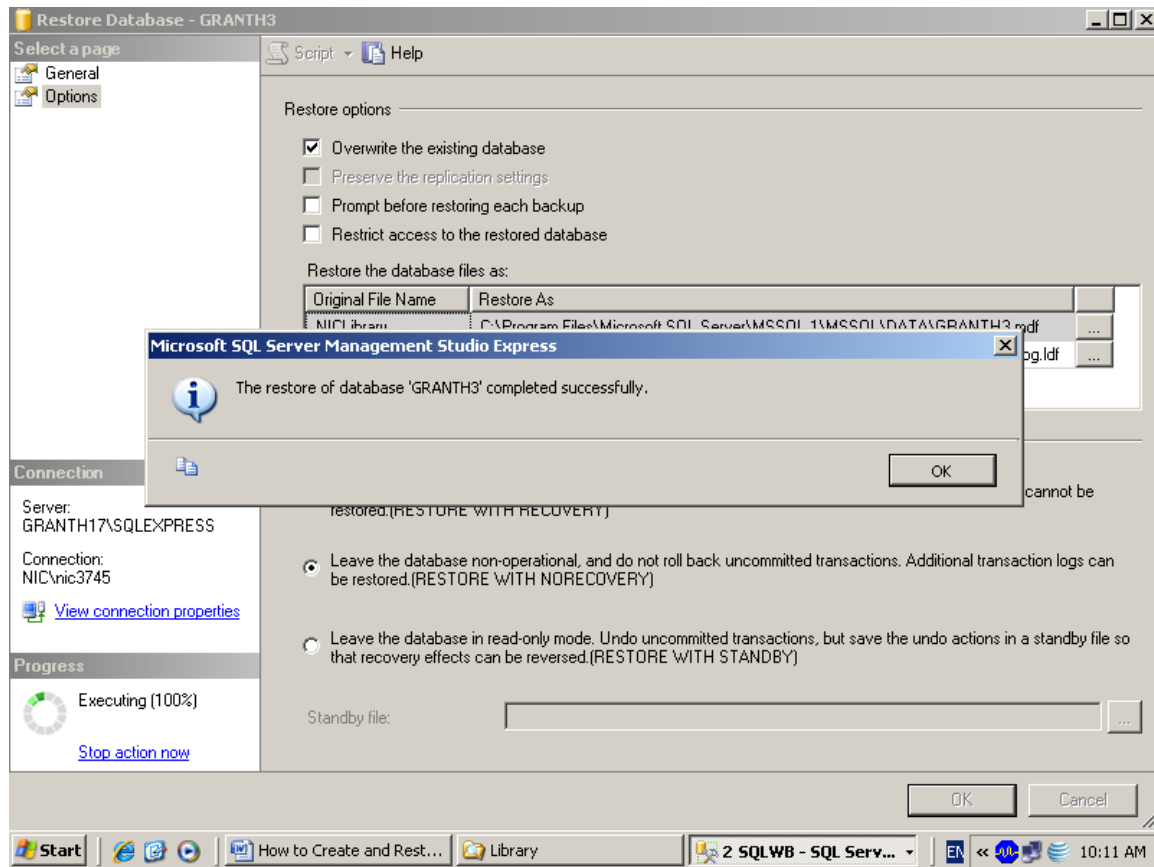


16. Check the Check box given in the above screen and press the OPTION tab given in the upper Left part of the above screen



NOTE: Here you may need to change the Path of the Database in case it gives error. The Path may be browse by clicking the ... button in the right side of the above screen.

17. Check the check box against the option “Overwrite the existing database...” from the above screen and press OK

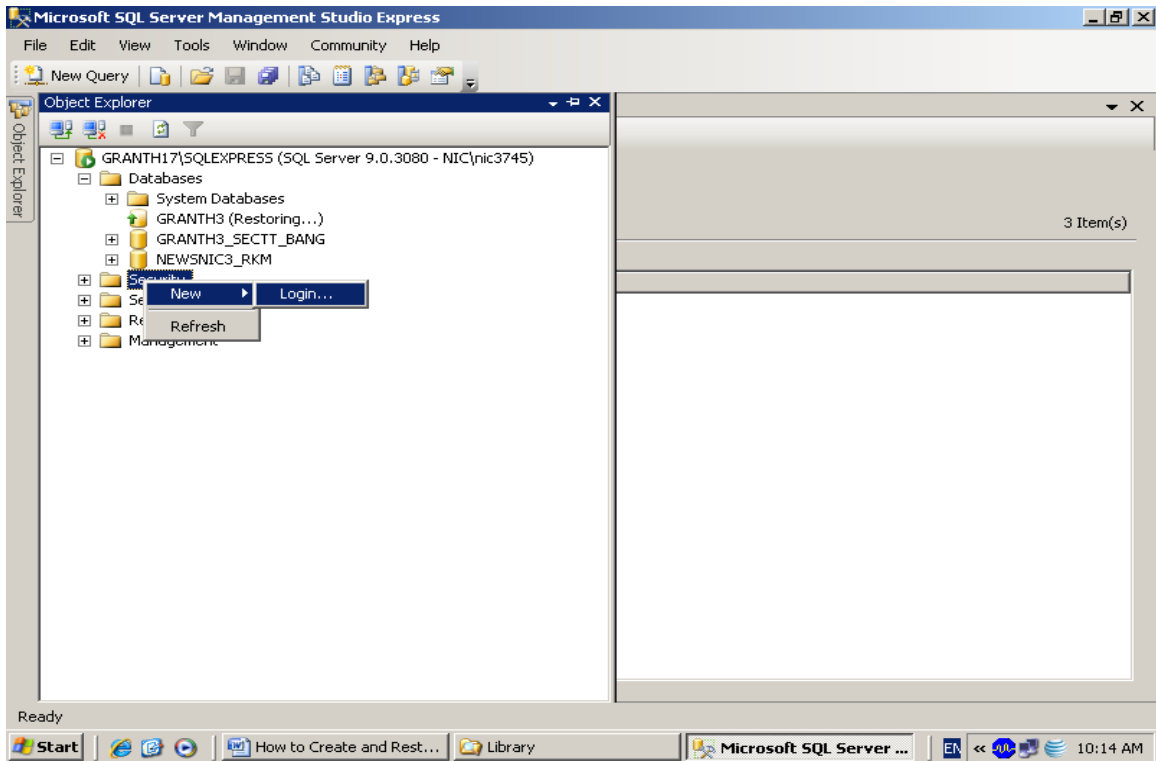


18. It will start the restoring the database, after successful restore it will give the message as seen in the above screen, then Press OK.

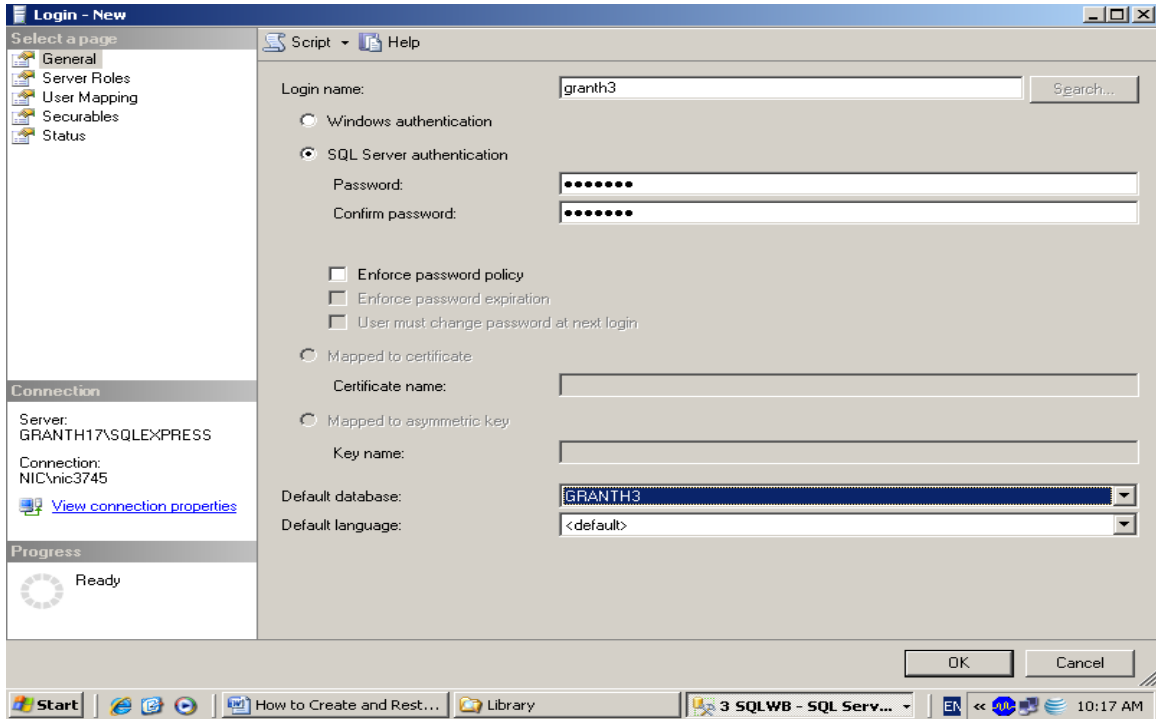
1.7 How to Create new Database User/Login for GRANTH3 database

After successful restore of the GRANTH3 database, you need to create a new Login with SQL Password, steps are given below:

1. Right Click the ‘SECURITY’ object from SQL Server 2005 and select **New Login** as given in the following screen



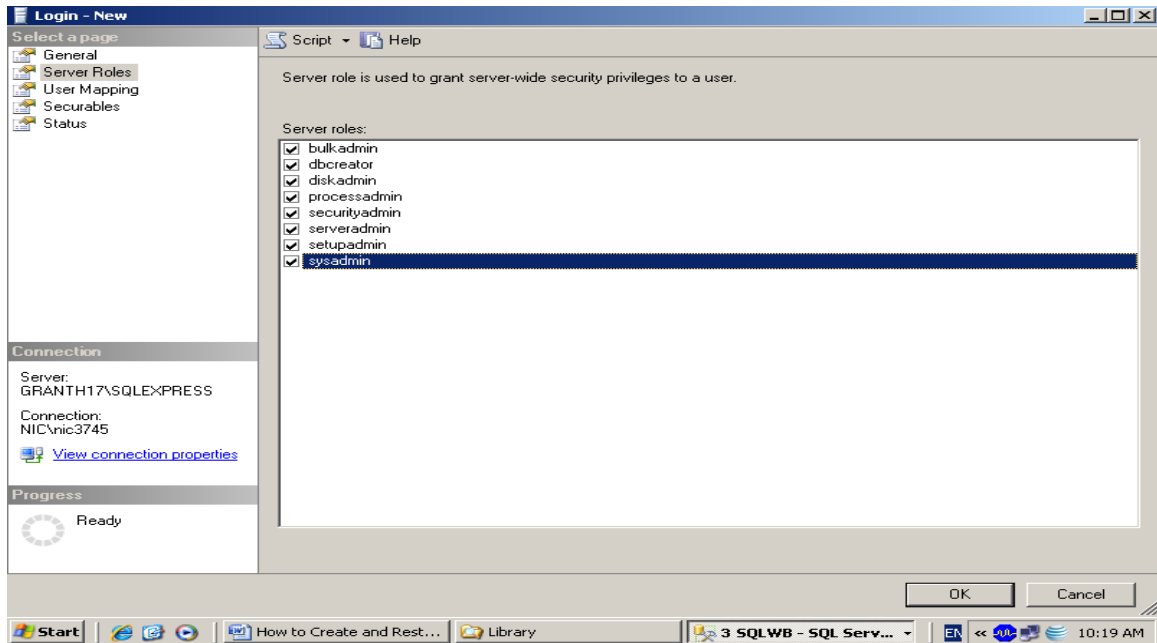
2. on click the New Login, new window will appear



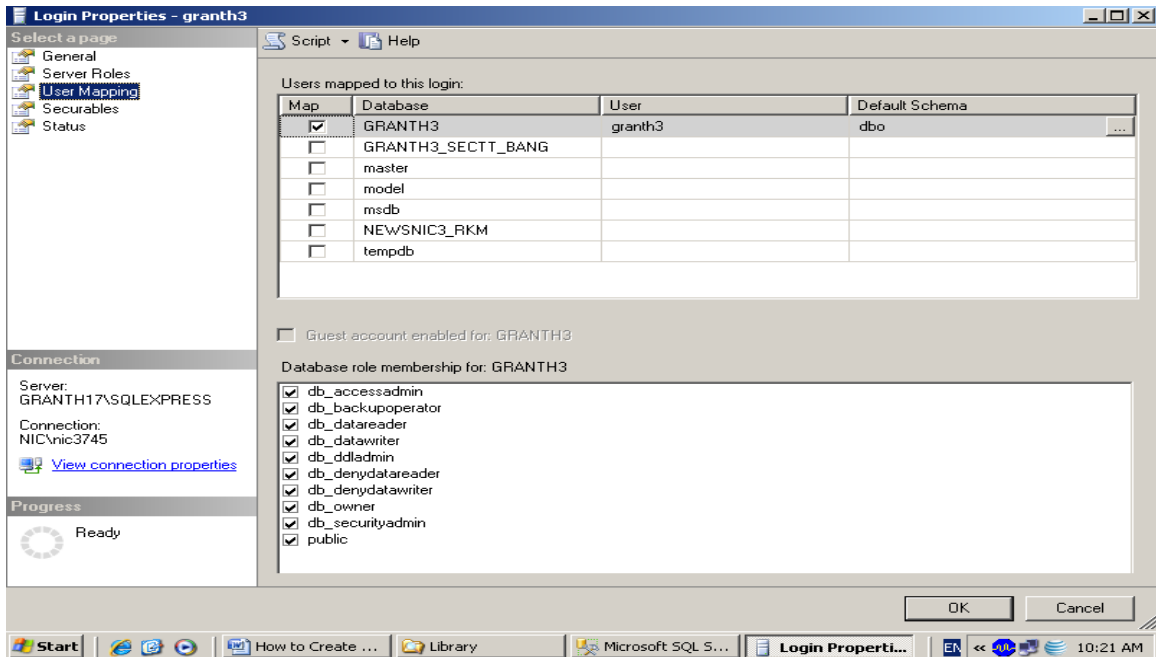
3. in the above screen, type the name of the login (**granth3**), choose SQL Server Authentication and type and re-type the password (**granth3**) and select the

database (GRANTH3) for which you are creating the user. However, you may give any user and password which must be noted down for future use). Login Name and Password are case sensitive

4. Then click the “Server Role” object from the Left side of the screen and check all the check boxes as given in the below screen



5. Then click the “User Mapping” object from the left side of the screen and select your database (GRANTH3) from the right side and check the first six check boxes as given in the below screen



6. The press the Ok

NOTE: now re-boot the system again. Now your database is fully prepared for use with e-Granthalaya software

NOTE: You must always note down the following information for setting up database connectivity with eG3: Database Server Name, Database Name, Login and Password. These information can be taken from SQL Server 2005

- a). Database Server Name / IP address where SQL Server 2005 is running
- b). Database Name:
- c). Login:
- d). Password